

SURVEY
REMONUMENTATION

RECEIVED FOR RECORD
CHIPPEWA COUNTY
STATE OF MICHIGAN

MAR 09 1994

Chippewa County Remonumentation Corner

LAND CORNER RECORDATION CERTIFICATE
Filing Requirement of Act 74, Mich. P.A. 1970

93 DEC 29 PM 2:53

COMMISSION

For corners in
Chippewa

(County)

Located In:

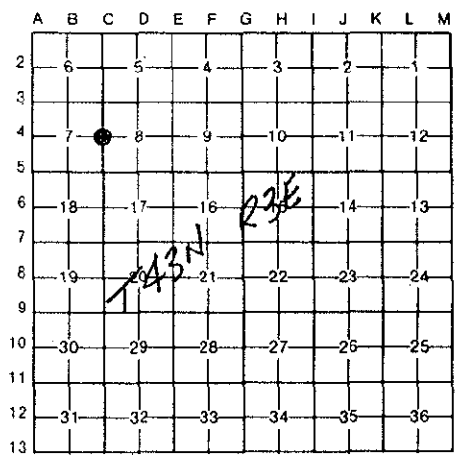
Corner Code #

1. Public Land Survey	T	<u>43N</u>	R	<u>3E</u>	<u>C-4</u>
	T	_____	R	_____	_____
	T	_____	R	_____	_____
	T	_____	R	_____	_____
2. Property Controlling in Section	S	_____	T	_____	R
	S	_____	T	_____	R
3. Miscellaneous Property in Sec.	S	_____	T	_____	R
	S	_____	T	_____	R

J. Roger Matlock
REGISTER OF DEEDS

Register of Deeds Stamp & File Number

- 4. Lot No. _____, Recorded Plat _____
- 5. Private Claims _____



I, William L. Karr, in a field survey on December 14, 19 93, do hereby certify that under requirements of P.A. 74, Michigan P.A. of 1970, the corner points mentioned in lines 1 and 2 above were in conformance with regulations and rules therefore as required in the current manual of survey instructions of the United States Department of the Interior, Bureau of Land Management or by a decree of a Court of Law and/or that the corner points mentioned in lines 3, 4 and 5 above were in conformance with the rules of the Michigan Board of Land Surveyors or by a Decree of a Court of Law; established, re-established, monumented, re-monumented, recovered, found as expressed below:

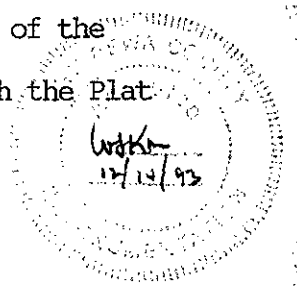
NOTE: Not more than 4 corners, all in the same town and range, may be recorded on this certificate.

A. Description of original monument and accessories and/or subsequent restoration:
(C-4) 1/4 Corner Sections 7 and 8 (T43N-R3E)

1982: William L. Karr, L.S. 27450. Corner recorded in Liber 6, Page 143 of the Chippewa County Corner Records.

Set 1/2" x 24" iron with plastic cap L.S. 27450, in accordance with the Plat of St. Mary's Shores Subdivision.

6" White Birch	N84°W	36.19'
Power Pole (GP1/203)	N46°E	56.92'
Power Pole (GP1/203A)	N57°W	87.93'



B. Description of corner evidence found and/or method applied in restoring or reestablishing corner:

(C-4) This corner is being perpetuated as part of the Chippewa County Remonumentation Program.

Found a 1/2" iron, L.S. 27450. Found the three record witness objects. Each power pole has a PK nail in the side. The nail in the White Birch is grown over. Did not chop out. Accepted corner position as found and offset it prior to road reconstruction. Replaced corner after construction completed. Added two additional witnesses. Set a nail with tag over nail scar on White Birch.

C. Description of monument for corner and accessories established to perpetuate locating the position of the corner:

(C-4) Corner is a 3/4" x 24" iron with plastic "Chippewa County Remonumentation" cap. Corner falls 0.5' East of centerline Gogomain Road (North-South, paved).

Witnesses:

Power Pole	N46°E	56.92'	(existing PK nail)
16" White Birch	N72°E	95.99'	
12" Red Pine	S13°W	140.75'	
7" White Birch	N84°W	36.21'	(existing-new nail & tag over scar)
Power Pole (GP1/203A)	N57°W	87.87'	(existing PK nail)



Signed by *William L. Karr*

Date 12/23/93

Surveyor's Michigan License No. 27450

NOTE: Bearings are compass bearings corrected for declination.
Distances are to a nail in side of witness objects unless noted.