

NOV 07 1994

COMMISSION

Chippewa County Remonumentation Corner

LAND CORNER RECORDATION CERTIFICATE

Filing Requirement of Act 74, Mich. P.A. 1970

For corners in

Chippewa

(County)

Located In:

Corner Code #

- 1. Public Land Survey T 44N R 1E H-1
- T _____ R _____
- T _____ R _____
- T _____ R _____
- 2. Property Controlling S _____ T _____ R _____
- in Section S _____ T _____ R _____
- 3. Miscellaneous S _____ T _____ R _____
- Property in Sec. S _____ T _____ R _____

\$ 7.00

LAND CORNER

\$ 2.00

MSSR

18 OCT 94 1:03 P.M.

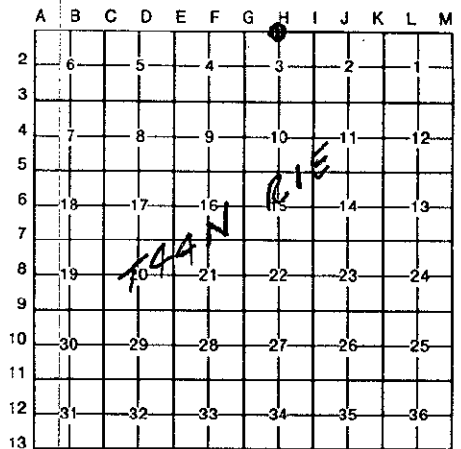
RECEIPT# 700

RECEIVED FOR RECORD

CHIPPEWA COUNTY - STATE OF MICHIGAN
SHARON H. KENNEDY, REGISTER OF DEEDS

Register of Deeds Stamp & File Number

- 4. Lot No. _____, Recorded Plat _____
- 5. Private Claims _____



I, William L. Karr, in a field survey on December 7, 19 93, do hereby certify that under requirements of P.A. 74, Michigan P.A. of 1970, the corner points mentioned in lines 1 and 2 above were in conformance with regulations and rules therefore as required in the current manual of survey instructions of the United States Department of the Interior, Bureau of Land Management or by a decree of a Court of Law and/or that the corner points mentioned in lines 3, 4 and 5 above were in conformance with the rules of the Michigan Board of Land Surveyors or by a Decree of a Court of Law; established, re-established, monumented, re-monumented, recovered, found as expressed below:

NOTE: Not more than 4 corners, all in the same town and range, may be recorded on this certificate.

A. Description of original monument and accessories and/or subsequent restoration:

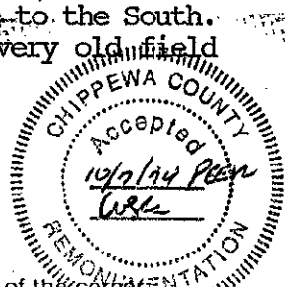
(H-1) North 1/4 Corner of Section 3 (T44N-R1E)

Corner not set in original survey.

B. Description of corner evidence found and/or method applied in restoring or reestablishing corner:

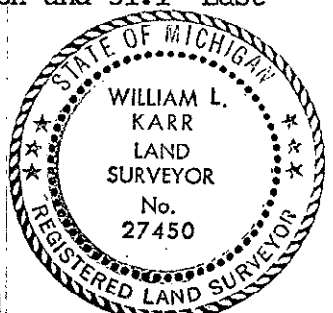
(H-1) This corner is being established as part of the Chippewa County Remonumentation Program.

Found no evidence of corner position. Established corner midway between Closing Corner 3/2 and Closing Corner 4/3 on a line between Standard Corner 34/35 and the South 1/4 Corner of Section 34. Corner falls 31' East of old fence line to the South. Distance to Closing Corner 3/2 (to the East) is 2648.0'. There is a very old field line 1324' to the East in Section 3.



C. Description of monument for corner and accessories established to perpetuate locating the position of the corner:
(H-1) Corner is a 3/4" x 24" iron with plastic "Chippewa County Remonumentation" cap. Corner falls in the centerline of Eighteen Mile Road. Falls 471' West of the centerline of a North-South creek, 20.5' East of fence to the North and 31.1' East of fence to the South.

Witnesses: 22" Oak N59°E 356.81'
Southwest Corner Metal Garage S65°E 222.97'
Power Pole S37°W 49.87'
South 1/4 Corner of Section 34 West 20.53'



Signed by William L. Karr Date 10/10/94

Surveyor's Michigan License No. 27450

NOTE: Bearings are compass bearings corrected for declination. Distances are to a nail in side of witness objects unless noted.