

LAND CORNER RECORDATION CERTIFICATE
Filing Requirement of Act 74, Mich. P.A. 1970

For corners in
Chippewa
 (County)

Located In: _____ Corner Code # _____

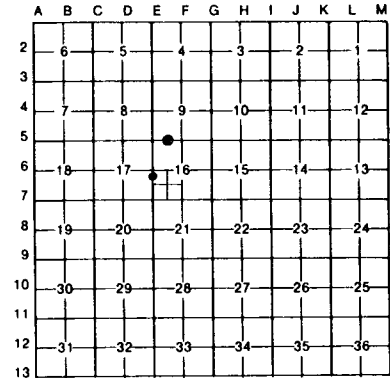
- | | | | |
|------------------------------------|-------------|--------------|-------------|
| 1. Public Land Survey | T _____ | R _____ | _____ |
| | T _____ | R _____ | _____ |
| | T _____ | R _____ | _____ |
| | T _____ | R _____ | _____ |
| 2. Property Controlling in Section | S <u>16</u> | T <u>44N</u> | R <u>1E</u> |
| | S <u>16</u> | T <u>44N</u> | R <u>1E</u> |
| | S _____ | T _____ | R _____ |
| 3. Miscellaneous Property in Sec. | S _____ | T _____ | R _____ |

Register of Deeds Stamp & File Number

4. Lot No. _____, Recorded Plat _____
 5. Private Claims _____

N-S Feb 23 1999
 1 Jul 13 1999

I, Stephan J. Szyszkoski, in a field survey on _____, 19_____, do hereby certify that under requirements of P.A. 74, Michigan P.A. of 1970, the corner points mentioned in lines 1 and 2 above were in conformance with regulations and rules therefore as required in the current manual of survey instructions of the United States Department of the Interior, Bureau of Land Management or by a decree of a Court of Law and/or that the corner points mentioned in lines 3, 4 and 5 above were in conformance with the rules of the Michigan Board of Land Surveyors or by a Decree of a Court of Law; established, re-established, monumented, re-monumented, recovered, found as expressed below:



NOTE: Not more than 4 corners, all in the same town and range, may be recorded on this certificate.

A. Description of original monument and accessories and/or subsequent restoration:

(1-Sec. 16) West 1/16 between Sections 9-16. Corner not established in the original survey. Corner noted in Field Notes of Survey by County Surveyor F.H. Brown for Desermeau and Munoskong Club, 1912 and July 1915: "The 1/4 post on N side was set by mistake 7.5 ft too far east. Set W. 1/8 line to run 3960 from east line but told him to move 12 ft east at N 1/8 post". Found no other record.
 (N-S 1/64 17;16) North-South 1/64 corner between Sections 17 & 16. Also known as the SW corner of the North 1/2 of the NW 1/4 of the SW 1/4 of Sec. 16. Corner not established in the original survey. Found no subsequent record.

B. Description of corner evidence found and/or method applied in restoring or reestablishing corner:

(1-Sec. 16) Established the corner midway and on a line of mean true bearing between Section corner 1318.29' West and Quarter corner 1318.29' East. At the position for the corner I placed a 1" IDx36" iron pipe capped with a 4" dia. cast aluminum MDNR tablet, appropriately stamped, flush with the ground. The corner falls in the centerline of an E-W grassy trail road at it's intersection with the east edge of a trail leading to the north.
 (N-S 1/64 17;16) Established the corner midway and on a line of mean true bearing between Quarter corner E6 654.68' north and 1/16 corner 654.68' south. At the position for the corner I placed a 1" IDx36" iron pipe capped with a 4" dia. cast aluminum MDNR tablet, stamped "N-S 1/64 17;16".

C. Description of monument for corner and accessories established to perpetuate locating the position of the corner:

(1) Set 1" pipe with 4" MDNR cap. Blazed, scribed, and set measuring nails in the following:
 2" Aspen N33W 29.6' "W1/16 BT"
 3" Aspen N14E 29.9' do
 2" W. Birch N35E 19.0' do
 5" Aspen S68E 47.8' do
 Bearings are magnetic. Distances are to nail with tag.

(N-S 1/64) Set 1" pipe w/4" MDNR cap. Blazed, scribed, and set measuring nails in the following:
 5" Cedar N18E 18.6' "1/64 BT"
 16" Tamarack S59E 40.9' do
 5" Balsam S45E 27.85' do
 8" W. Birch S83W 23.9' do
 Bearings are magnetic. Dist. to nail w/tag. C/L trail is East 16'. Placed squared and scribed cedar post adjacent.



Signed by Stephan J. Szyszkoski Date 2/24/00
 Surveyor's Michigan License No. 33986