

MICHIGAN  
DEPARTMENT OF CONSERVATION  
FORESTRY DIVISION

# LAND CORNER RECORD

T. 14 N.R. 1 W

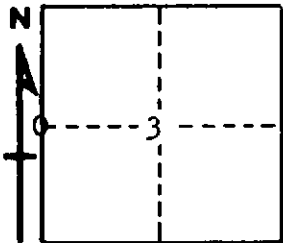
Chippewa County COUNTY

DESCRIPTION OF CORNER 1/4 Corner between Sections 3-4

CORNER MONUMENT 1" Pipe with 4" Aluminum Cap

DATE MONUMENT PLACED AND WITNESSED 5-16-62 with W. Lehman, District Forester

WITNESSES TO CORNER..... NBT's: 8" Red Oak (1/4 S NBT) N 82° E 50 links



8" Red Oak (1/4 S NBT) S 22° E 41 links

8" Red Oak (1/4 S NBT) S 60° W 53 links

AND

CIRCLE CORNER REGISTERED

**DESCRIPTION IN DETAIL AS TO HOW CORNER WAS LOCATED AND IDENTIFIED OR RESTORED.**

This corner was re-established by single proportionate measure between two Section Corners.

Found no evidence of original corner.

Corner lies 3/4 Chain East of Road.

**SURVEYOR'S SEAL**

SIGNED Billy D. Buckler DATE 8-22-63  
REGISTERED LAND SURVEYOR  
Billy D. Buckler