

MICHIGAN
DEPARTMENT OF CONSERVATION
FORESTRY DIVISION

LAND CORNER RECORD

T. 44 N.R. 1 W

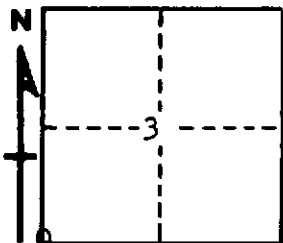
Chippewa COUNTY

DESCRIPTION OF CORNER Section corner common to Sections 3-4-9-10

CORNER MONUMENT 1" Pipe with 4" Aluminum Cap

DATE MONUMENT PLACED AND WITNESSED 5-16-62 with W. Lehman, District Forester

WITNESSES TO CORNER..... NBT's: 16" Red Pine Stub (NBT) S 58° E 34 links



16" Red Pine Stub (NBT) S 6° W 57 links

8" Red Oak (S 4 NBT) N 72° W 81 links

AND

CIRCLE CORNER REGISTERED

DESCRIPTION IN DETAIL AS TO HOW CORNER WAS LOCATED AND IDENTIFIED OR RESTORED.

This corner was re-established on line and by single proportionate distance from corners 1 mile North and 1 mile South.

No evidence of original corner.

SURVEYOR'S SEAL

SIGNED Billy D. Buckler DATE 8-23-63
REGISTERED LAND SURVEYOR
Billy D. Buckler