

MICHIGAN
DEPARTMENT OF CONSERVATION
FORESTRY DIVISION

LAND CORNER RECORD

T. 44 N.R. 1 W

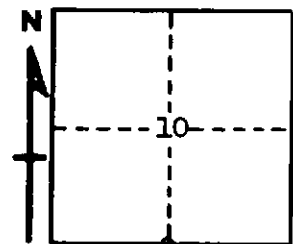
Chippewa COUNTY

DESCRIPTION OF CORNER 1/4 Corner between Sections 10-15

CORNER MONUMENT 1" Pipe with 1/4" Aluminum Cap

DATE MONUMENT PLACED AND WITNESSED 5-24-62

WITNESSES TO CORNER..... NBT's: 9" Tamarack (1/4 S NBT) N 66° E 30 links



7" Soft Maple (1/4 S NBT) S 55° E 25 links

AND

CIRCLE CORNER REGISTERED

DESCRIPTION IN DETAIL AS TO HOW CORNER WAS LOCATED AND IDENTIFIED OR RESTORED.

This corner was re-established midway and on line between two Section Corners.

No evidence of Original Corner.

SURVEYOR'S SEAL

SIGNED Billy D. Buckler DATE 8-23-63
REGISTERED LAND SURVEYOR
Billy D. Buckler