

MICHIGAN
DEPARTMENT OF CONSERVATION
FORESTRY DIVISION

LAND CORNER RECORD

T. 44 N.R. 1 W

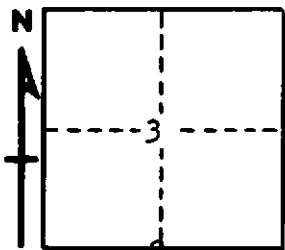
Chippewa COUNTY

DESCRIPTION OF CORNER 1/4 Corner between Sections 3-10

CORNER MONUMENT 1" Pipe with 4" Aluminum Cap

DATE MONUMENT PLACED AND WITNESSED 5-24-62

WITNESSES TO CORNER..... NBT's: 7" Red Pine (1/4 S NBT) N 5° W 66 links



9" Red Pine (1/4 S NBT) N 72° E 74 links

AND

CIRCLE CORNER REGISTERED

DESCRIPTION IN DETAIL AS TO HOW CORNER WAS LOCATED AND IDENTIFIED OR RESTORED.

This corner was re-established midway and on line between two Section Corners.

No evidence of original corner.

SURVEYOR'S SEAL

SIGNED Billy D. Buckler DATE 8-23-63
REGISTERED LAND SURVEYOR
Billy D. Buckler