

LAND CORNER RECORDATION CERTIFICATE  
Filing Requirement of Act 74, Mich. P.A. 1970

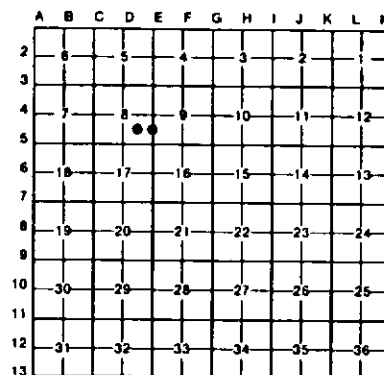
For corners in  
Chippewa  
(County)

Located In: Corner Code ##

1. Public Land Survey	T	_____	R	_____	_____
	T	_____	R	_____	_____
	T	_____	R	_____	_____
	T	_____	R	_____	_____
2. Property Controlling in Section	S	8	T	44N	R 1W 13
3. Miscellaneous Property in Sec.	S	8	T	44N	R 1W 14
	S	_____	T	_____	R _____
	S	_____	T	_____	R _____

Register of Deeds Stamp & File Number

4. Lot No. \_\_\_\_\_, Recorded Plat \_\_\_\_\_  
5. Private Claims \_\_\_\_\_



I, Stephan J. Szyszkoski, in a field survey on 13 October 04, 1994, 19\_\_\_\_\_, do hereby certify that under requirements of P.A. 74, Michigan P.A. of 1970, the corner points mentioned in lines 1 and 2 above were in conformance with regulations and rules therefore as required in the current manual of survey instructions of the United States Department of the Interior, Bureau of Land Management or by a decree of a Court of Law and/or that the corner points mentioned in lines 3, 4 and 5 above were in conformance with the rules of the Michigan Board of Land Surveyors or by a Decree of a Court of Law; established, re-established, monumented, re-monumented, recovered, found as expressed below:

NOTE: Not more than 4 corners, all in the same town and range, may be recorded on this certificate.

A. Description of original monument and accessories and/or subsequent restoration:

- (13-Sec. 8) Southeast 1/16 corner, Section 8. Corner not established in the original survey. Found no subsequent record.
- (14-Sec. 8) South 1/16 corner between Sections 8-9. Corner not established in the original survey. Found no subsequent record.

B. Description of corner evidence found and/or method applied in restoring or reestablishing corner:

- (13-Sec. 8) Found no evidence of prior monumentation at the corner position. Established the corner at the intersection of straight lines connecting opposite 1/16 corners, those to the North, East and South being monumented, that to the west, unmonumented. At the position for the corner, I placed a 1" I.D. x 36" iron pipe capped with a 4" diameter cast aluminum MDNR tablet, appropriately stamped.
- (14-Sec. 8) Found no evidence of previous monumentation at the corner position. Established the corner on a straight line between 1/4 corner 1303.38' north and section corner 1303.38' south. At the position for the corner, I placed a 1" I.D. x 36" iron pipe capped with a 4" diameter cast aluminum MDNR tablet, appropriately stamped.

C. Description of monument for corner and accessories established to perpetuate localing the position of the corner:

- (13) Set a 1" ID iron pipe with a 4" MDNR cap. Blazed, scribed, and set measuring nails with tags in the following bearing trees:  
4" Maple S88W 12.95' "SE1/16 BT"  
8" Oak S60W 6.2' "SE1/16 BT"  
3" Maple S54E 5.6' "SE1/16 BT"  
3" Oak N70E 20.45' "SE1/16 BT"  
Placed a 5" squared and scribed post adjacent. Bearings are magnetic.
- (14) Set a 1" ID iron pipe with a 4" MDNR cap. Blazed, scribed and set measuring nails with tags in the following:  
5" Clump oak S46E 123.7' "S1/16 BT"  
8" Oak S80E 56.2' "S1/16 BT"  
6" Oak S82E 58.35' "S1/16 BT"  
3" Oak S86E 51.3' "S1/16 BT"  
Placed a 6" squared and scribed cedar post adjacent. Bearings are magnetic.



Signed by Stephan J. Szyszkoski Date 2-7-95

Surveyor's Michigan License No. 33986