

LAND CORNER RECORDATION CERTIFICATE
Filing Requirement of Act 74, Mich. P.A. 1970

For corners in
Chippewa
(County)

	Located In:	Corner Code ##
1. Public Land Survey	T _____ R _____	_____
	T _____ R _____	_____
	T _____ R _____	_____
	T _____ R _____	_____
2. Property Controlling in Section	S _____ B T _____ 44NR _____ 1W _____	1/64 SE-SE
	S _____ B T _____ 44NR _____ 1W _____	16
3. Miscellaneous Property in Sec.	S _____ B T _____ 44NR _____ 1W _____	2
	S _____ T _____ R _____	_____

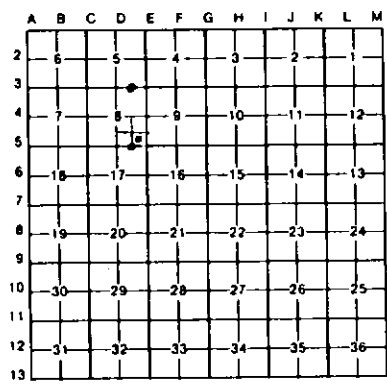
Register of Deeds Stamp & File Number

- 4. Lot No. _____, Recorded Plat _____
- 5. Private Claims _____

2 October 24, 1994
16 October 24, 1994

I, Stephan J. Szyszkoski, in a field survey on 1/64 October 04, 1994, 19 _____ do hereby certify that under requirements of P.A. 74, Michigan P.A. of 1970, the corner points mentioned in lines 1 and 2 above were in conformance with regulations and rules therefore as required in the current manual of survey instructions of the United States Department of the Interior, Bureau of Land Management or by a decree of a Court of Law and/or that the corner points mentioned in lines 3, 4 and 5 above were in conformance with the rules of the Michigan Board of Land Surveyors or by a Decree of a Court of Law, established, re-established, monumented, re-monumented, recovered, found as expressed below:

NOTE: Not more than 4 corners, all in the same town and range, may be recorded on this certificate.



- A. Description of original monument and accessories and/or subsequent restoration:
 - (1/64 SE-SE) Center of the SE1/4 of the SE1/4 of Section 8. Corner not established in the original survey. Found no subsequent record.
 - (16-Sec. 8) East 1/16 corner between Sections 8-17. corner not established in the original survey. Found no subsequent record.
 - (2-Sec. 8) East 1/16 corner between Sections 5-8. Corner not established in the original survey. Found no subsequent record.

- B. Description of corner evidence found and/or method applied in restoring or reestablishing corner.
 - (1/64 SE-SE) Found no evidence of prior monumentation at the corner position. Established the corner at the intersection of straight lines connecting opposite 1/64th corners, those to the north and east being monumented, those to the south and west being unmonumented. At the position for the corner, I placed a 1" I.D. x 36" iron pipe capped with a 4" diameter cast aluminum MDNR tablet, appropriately stamped.
 - (16-Sec. 8) Found no evidence of prior monumentation at the corner position. Established the corner equidistant and on a straight line between Section corner 1340.22' east and 1/4 corner 1340.22' west. At the position for the corner, I placed a 1" I.D. x 36" iron pipe capped with a 4" diameter cast aluminum MDNR tablet, appropriately stamped.
 - (2-Sec. 8) Found no evidence of prior monumentation at the corner position. Established the corner equidistant and on a straight line between 1/4 corner 1318.95' west (unmonumented - see witness corner dated 2-07-1995 by the undersigned), and section corner 1318.95' east. At the position for the corner, I placed a 1" I.D. x 36" iron pipe capped with a 4" diameter cast aluminum MDNR tablet, appropriately stamped.

- C. Description of monument for corner and accessories established to perpetuate locating the position of the corner:

(1/64 SE-SE) Set a 1" I.D. iron pipe with a 4" MDNR cap. Blazed, scribed, and set measuring nails with tags in the following: 10" Aspen S04E 9.6' "BT" 6" Oak S72W 53.15' "BT" 4" Aspen N55W 7.05' "BT" 4" Aspen N02W 6.75' "BT" Placed a 6" squared cedar post adjacent. Bearings are magnetic.	(16) Set a 1" I.D. iron pipe with a 4" MDNR cap. Blazed, scribed, and set measuring nails with tags in the following: 12" Balsam S40E 23.5' "E1/16 BT" 6" W. Pine S12W 32.1' "E1/16 BT" 12" Balsam S46W 4.6' "E1/16 BT" 14" Aspen N02W 18.95' "E1/16 BT" Found an angle iron marker S77E 6.21' from the corner. Bearings are magnetic.	(2) Set a 1" I.D. iron pipe with a 4" MDNR cap. Blazed, scribed, and set measuring nails with tags in the following: 5" J. Pine N19W 109.1' "E1/16 BT" 6" J. Pine N54E 91.05' "E1/16 BT" 8" W. Pine S89E 96.65' "E1/16 BT" 12" R. Pine S63E 132.45' "E1/16 BT" E'ly airport runway fence, West 75.5' Centerline road C. NE, East 63' Placed a 5" squared and scribed cedar post adjacent. Bearings are magnetic.
---	---	--

Signed by Stephan J. Szyszkoski Date 2-7-95
Surveyor's Michigan License No. 33986

