

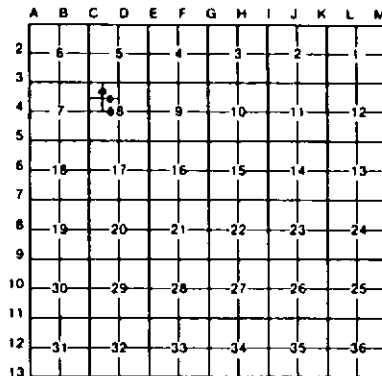
LAND CORNER RECORDATION CERTIFICATE
Filing Requirement of Act 74, Mich. P.A. 1970

For corners in
Chippewa

(County)	Located In:	Corner Code #
1. Public Land Survey	T _____ R _____	_____
	T _____ R _____	_____
	T _____ R _____	_____
	T _____ R _____	_____
2. Property Controlling in Section	S <u>8</u> T <u>44N</u> R <u>1W</u>	<u>1/64 C-C E-W</u>
	S <u>8</u> T <u>44N</u> R <u>1W</u>	<u>1/64 C-E-NW</u>
3. Miscellaneous Property in Sec	S <u>8</u> T <u>44N</u> R <u>1W</u>	<u>1/64 C-N-NW</u>
	S _____ T _____ R _____	_____

Register of Deeds Stamp & File Number

4. Lot No. _____, Recorded Plat _____
 5. Private Claims _____



I, Stephan J. Szyszkoski, in a field survey on January 23, 1995, 19_____, do hereby certify that under requirements of P.A. 74, Michigan P.A. of 1970, the corner points mentioned in lines 1 and 2 above were in conformance with regulations and rules therefore as required in the current manual of survey instructions of the United States Department of the Interior, Bureau of Land Management or by a decree of a Court of Law and/or that the corner points mentioned in lines 3, 4 and 5 above were in conformance with the rules of the Michigan Board of Land Surveyors or by a Decree of a Court of Law, established, re-established, monumented, re-monumented, recovered, found as expressed below.

NOTE: Not more than 4 corners, all in the same town and range, may be recorded on this certificate.

A. Description of original monument and accessories and/or subsequent restoration:

(1/64 C-C E-W) 1/64 corner between the center of Section 8 and the West 1/16 corner of Section 8. Corner not established in the original survey. Found no subsequent record.

(1/64 C-E-NW) 1/64 corner east of the NW 1/16 corner of Section 8. Corner not established in the original survey. Found no subsequent record.

(1/64 C-N-NW) 1/64 corner north of the NW 1/16 corner of Section 8. Corner not established in the original survey. Found no subsequent record.

B. Description of corner evidence found and/or method applied in restoring or reestablishing corner:

(1/64 C-C E-W) Found no evidence of prior monumentation at the corner position. Established the corner equidistant and on a straight line between center of section 8 and the west 1/16 corner of section 8, said corners being 664.29' east and west, respectively. At the position for the corner, I placed a 1" I.D. x 3/8" iron pipe capped with a 4" diameter MDNR tablet, appropriately stamped.

(1/64 C-E-NW) Found no evidence of prior monumentation at the corner position. Established the corner equidistant and on a straight line between 1/4 corner between Sections 5-8, and the north 1/16 corner of Section 8, said corners being 653.60' north and south, respectively. At the position for the corner, I placed a 1" I.D. x 3/8" iron pipe capped with a 4" diameter MDNR tablet, appropriately stamped.

(1/64 C-N-NW) Found no evidence of prior monumentation at the corner position. Established the corner equidistant and on a straight line between 1/16 corners #1 and #4, said 1/16 corners being 654.57' north and south, respectively. At the position for the corner, I placed a 1" I.D. x 3/8" iron pipe capped with a 4" diameter MDNR tablet, appropriately stamped.

C. Description of monument for corner and accessories established to perpetuate locating the position of the corner:

(1/64 C-C E-W) Set a 1" IO iron pipe with a 4" MDNR cap. Blazed, scribed, and set measuring nails in the following:	(1/64 C-E-NW) Set a 1" IO iron pipe with a 4" MDNR cap. Blazed, scribed, and set measuring nails in the following:	(1/64 C-N-NW) Set a 1" IO iron pipe with a 4" MDNR cap. Blazed, scribed, and set measuring nails in the following:
Twin B" Oak N62E 21.9' "1/64 BT"	5" J. Pine S73E 13.65' "1/64 BT"	5" J. Pine N43W 13.95' "1/64 BT"
3" Oak S32E 18.35' "1/64 BT"	10" J. Pine N58E 29.7' "1/64 BT"	6" J. Pine N14E 21.4' "1/64 BT"
3" J. Pine S72W 15.6' "1/64 BT"	5" J. Pine N05E 34.5' "1/64 BT"	10" Oak N50E 21.25' "1/64 BT"
5" W. Birch N65W 33.2' "1/64 BT"	8" J. Pine N60W 22.3' "1/64 BT"	4" J. Pine S20E 15.4' "1/64 BT"

Placed a 7" squared cedar post adjacent. Bearings are magnetic.

Placed a 4" squared cedar post adjacent. Bearings are magnetic.

Signed by Stephan J. Szyszkoski Date 2-7-95

