

LAND CORNER RECORDATION CERTIFICATE
Filing Requirement of Act 74, Mich. P.A. 1970

For corners in
Chippewa
(County)

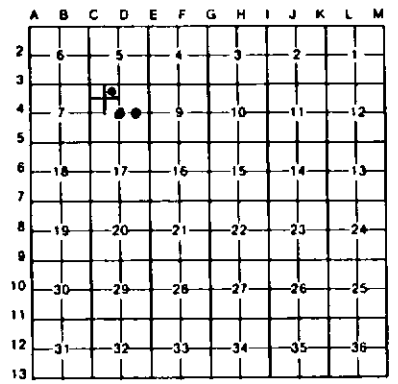
	Located In:	Corner Code #
1. Public Land Survey	T 44N R 1W	D4
	T R	
	T R	
	T R	
2. Property Controlling in Section	S 8 T 44N R 1W	1/64 NE-NW
	S 8 T 44N R 1W	9
3. Miscellaneous Property in Sec.	S T R	
	S T R	

Register of Deeds Stamp & File Number

- 4. Lot No. _____, Recorded Plat _____
- 5. Private Claims _____

I, Stephan J. Szyszkoski, in a field survey on January 23, 1995, 19____, do hereby certify that under requirements of P.A. 74, Michigan P.A. of 1970, the corner points mentioned in lines 1 and 2 above were in conformance with regulations and rules heretofore as required in the current manual of survey instructions of the United States Department of the Interior, Bureau of Land Management or by a decree of a Court of Law and/or that the corner points mentioned in lines 3, 4 and 5 above were in conformance with the rules of the Michigan Board of Land Surveyors or by a Decree of a Court of Law; established, re-established, monumented, re-monumented, recovered, found as expressed below:

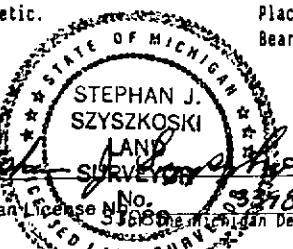
NOTE: Not more than 4 corners, all in the same town and range, may be recorded on this certificate.



- A. Description of original monument and accessories and/or subsequent restoration:
- (D4) Center of Section 8. Corner not established in the original survey. Found no subsequent record.
 - (1/64 NE-NW) Center of the NE1/4 of the NW1/4 of Section 8. Corner not established in the original survey. Found no subsequent record.
 - (9-Sec. 8) East 1/16 corner of Section 8. Corner not established in the original survey. Found no subsequent record.

- B. Description of corner evidence found and/or method applied in restoring or reestablishing corner:
- (D4) Found no evidence of prior monumentation at the corner position. Established the corner at the intersection of straight lines connecting opposite 1/4 corners, being 2614.40' north, 2616.61' south, 2659.15' east, and 2657.16' west. At the position for the corner, I placed a 1" I.D. x 36" iron pipe capped with a 4" diameter MDNR tablet, appropriately stamped.
 - (1/64 NE-NW) Found no evidence of prior monumentation at the corner position. Established the corner at the intersection of straight lines connecting opposite 1/64 corners, the 1/64 corners south and west being monumented, those north and east being unmonumented. At the position for the corner, I placed a 1" I.D. x 36" iron pipe capped with a 4" diameter MDNR tablet, appropriately stamped.
 - (9-Sec. 8) Found no evidence of prior monumentation at the corner position. Established the corner midway and on a straight line between Center of section 8 1329.58' west and 1/4 corner 1329.58' east. At the position for the corner, I placed a 1" I.D. x 36" iron pipe capped with a 4" diameter MDNR tablet, appropriately stamped.

- C. Description of monument for corner and accessories established to perpetuate locating the position of the corner:
- | | | |
|---|---|--|
| (D4) Set a 1" I.D. iron pipe with a 4" MDNR cap. Blazed, scribed, and set measuring nails in the following: | (1/64 NE-NW) Set a 1" I.D. iron pipe with a 4" MDNR cap. Blazed, scribed, and set measuring nails in the following: | (9) Set a 1" I.D. iron pipe with a 4" MDNR cap. Blazed, scribed, and set measuring nails with tags in the following: |
| 20" Dak N65W 29.5' "CB BT" | 8" J. Pine S86W 34.2' "1/64 BT" | 3" Aspen N76W 9.95' "E1/16 BT" |
| 5" J. Pine N21E 30.4' "CB BT" | 3" Oak N26W 10.6' "1/64 BT" | 6" J. Pine N56E 76.0' "E1/16 BT" |
| 5" J. Pine N72E 25.5' "CB BT" | 6" Oak S52W 43.2' "1/64 BT" | 3" Oak N82E 92.15' "E1/16 BT" |
| 10" J. Pine S24E 28.35' "CB BT" | 5" J. Pine S22W 53.9' "1/64 BT" | 3" J. Pine S64E 41.4' "E1/16 BT" |
| Bearings are magnetic. | Placed a squared 6" cedar post adjacent. Bearings are magnetic. | Set a 4" squared cedar post adjacent. Bearings are magnetic. |



Signed by Stephan J. Szyszkoski Date 2-7-95
 Surveyor's Michigan License No. 31686