

LAND CORNER RECORDATION CERTIFICATE
Filing Requirement of Act 74, Mich. P.A. 1970

For corners in
 Chippewa

	Located In:	Corner Code #
(County)		
1. Public Land Survey	T <u>44N</u> R <u>1W</u>	<u>C3</u>
	T <u>44N</u> R <u>1W</u>	<u>D3</u>
	T <u> </u> R <u> </u>	<u> </u>
	T <u> </u> R <u> </u>	<u> </u>
2. Property Controlling in Section	S <u> </u> T <u>44N</u> R <u>1W</u>	<u>4</u>
	S <u> </u> T <u> </u> R <u> </u>	<u> </u>
3. Miscellaneous Property in Sec.	S <u> </u> T <u> </u> R <u> </u>	<u> </u>
	S <u> </u> T <u> </u> R <u> </u>	<u> </u>

Register of Deeds Stamp & File Number

4. Lot No. _____, Recorded Plat _____
 5. Private Claims _____

D3 January 11, 1995
 C3 December 20, 1994

I, Stephan J. Szyszkoski, in a field survey on 4 October 24, 1994, 19_____, do hereby certify that under requirements of P.A. 74, Michigan P.A. of 1970, the corner points mentioned in lines 1 and 2 above were in conformance with regulations and rules therefore as required in the current manual of survey instructions of the United States Department of the Interior, Bureau of Land Management or by a decree of a Court of Law and/or that the corner points mentioned in lines 3, 4 and 5 above were in conformance with the rules of the Michigan Board of Land Surveyors or by a Decree of a Court of Law, established, re-established, monumented, re-monumented, recovered, found as expressed below:

NOTE: Not more than 4 corners, all in the same town and range, may be recorded on this certificate.

A. Description of original monument and accessories and/or subsequent restoration:

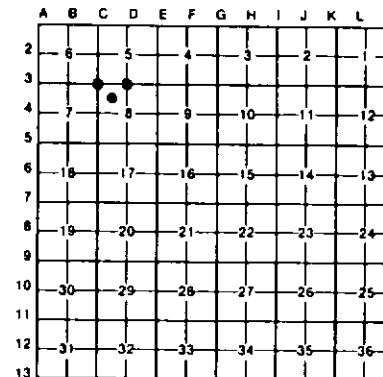
(C3) Corner common to Sections 5-6-7-8. Corner re-monumented in 1971 by Billy D. Buckler, RLS as follows: "This corner replaced from possible witness trees: a down W. Pine, N68E 55 links, and a down log of a Y. Pine S08W 33 links. Distance south to swamp edge checks. Corner appears to be in line with an old road one mile to North. Corner lies 15' north of a trail road". Buckler placed a 1" pipe with 4" aluminum cap and the following NBTs: 10" Jack Pine N63E 26.7', 9" Jack Pine S02E 52.5', 7" Jack Pine N42W 25.8'.
 (D3) WITNESS CORNER to Quarter corner between Sections 5-8. Original quarter corner established by James Mullett in 1845 as follows: Set Quarter Section post, Fir 16 S42W 18, Maple 8 N57E 92. Original line notes show a Hemlock line tree 18.81 chains west of the corner. Found no subsequent record.
 (4-Sec. 8) Northwest 1/16 corner, Section 8. Corner not established in the original survey. Found no subsequent record.

B. Description of under evidence found and/or method applied in restoring or reestablishing corner:

(C3) Found and accepted Buckler's monument, a 1" iron pipe capped with a 4" aluminum MDNR tablet, in good condition, and at record bearing and distance from two remaining J. Pine NBTs: those NE and SE. The NBT NW has been cut. Set measuring nails with tags in these trees, marked new top blazes, and marked two new NBTs as described below.
 (D3) Original post and accessories not recovered. The hemlock line tree was not recovered. Found no evidence of the position of the original corner on the ground. The corner location now falls within the fenced off runway area of Chippewa International Airport. I reestablished the corner equidistant and on a straight line between monumented section corners 2637.91' east and west. I did not monument the corner position but placed a WITNESS CORNER on the section line 841.02' west of the quarter corner 1.5' west of the westerly airport fence. The witness corner is marked with a 1" ID x 36" iron pipe capped with a 4" dia. cast aluminum MDNR tablet, appropriately stamped.
 (4-Sec. 8) Found no evidence of prior monumentation at the corner position. Established the corner at the intersection of straight lines connecting opposite 1/16 corners. The 1/16 corners East, South, and West are unmonumented positions computed as being midway and on a straight line between respective quarter and section corners. The 1/16 corner to the north was monumented as part of this survey. Computations were made using closed traverse data exhibiting acceptable closure. At the position for the corner, I placed a 1" I.D. x 36" iron pipe capped with a 4" diameter cast aluminum MDNR tablet, appropriately stamped.

C. Description of monument for corner and accessories established to perpetuate locating the position of the corner:

(C3) Found 1" pipe with 4" MDNR cap.	(D3) WITNESS CORNER to 1/4 corner	(4) Set a 1" ID iron pipe with a 4" MDNR cap. Blazed, scribed, and set measuring nails with tags in the following:
Blazed, scribed, and set measuring nails with tags in the following:	between sections 5-8. Set 1" ID iron pipe with a 4" MDNR cap. Blazed, scribed and set measuring nails with tags in the following:	8" Oak N35E 22.3' "NW1/16 BT"
8" J. Pine S43E 27.2' "S8 NBT"	4" J. Pine S62W 20.4' "WC BT"	4" W. Pine S05W 49.1' "NW1/16 BT"
10" J. Pine S63W 5.55' "S7 NBT"	4" J. Pine S08E 49.3' "WC BT"	6" J. Pine S21W 12.3' "NW1/16 BT"
The 1972 wits:	4" J. Pine S02E 49.7' "WC BT"	8" Oak N42W 11.8' "NW1/16 BT"
12" J. Pine N66E 30.0' "S5"	5" J. Pine S15W 53.6' "WC BT"	Placed a 4" squared and scribed post adjacent. Placed a location poster on a 5" J. Pine, at a trail Course NE, South approx. 173'. Bearings are magnetic.
10" J. Pine S01E 52.45' "S8"		
Placed a 4" squared and scribed cedar post adjacent to bearing magnetic.	N'ly airport fence East 1.5'. Set a 6" squared cedar post adjacent. Bearings are magnetic.	



Signed by

Stephan J. Szyszkoski

Date

2-7-95

Surveyor's Michigan License No. 33986
 No. _____

Michigan Department of Natural Resources - Forest Management Division.