

LAND CORNER RECORDATION CERTIFICATE
Filing Requirement of Act 74, Mich. P.A. 1970

For corners in
Chippewa
(County)

Located In: Corner Code #

1. Public Land Survey T 44N R 1W E3
T 44N R 1W E4
T R
T R

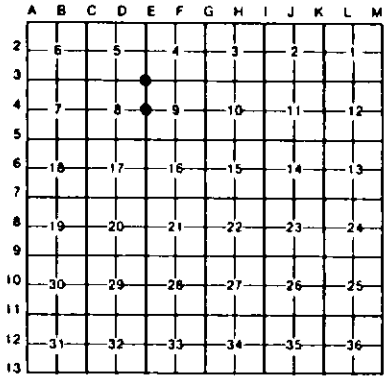
2. Property Controlling S T R
in Section S T R

3. Miscellaneous S T R
Property in Sec. S T R

Register of Deeds Stamp & File Number

4. Lot No. _____, Recorded Plat _____

5. Private Claims _____



E4 October 24, 1994

I, Stephan J. Szyszkoski, in a field survey on E3 December 06, 1994, 19_____, do hereby certify that under requirements of P.A. 74, Michigan P.A. of 1970, the corner points mentioned in lines 1 and 2 above were in conformance with regulations and rules therefore as required in the current manual of survey instructions of the United States Department of the Interior, Bureau of Land Management or by a decree of a Court of Law and/or that the corner points mentioned in lines 3, 4 and 5 above were in conformance with the rules of the Michigan Board of Land Surveyors or by a Decree of a Court of Law, established, re-established, monumented, re-monumented, recovered, found as expressed below:

NOTE: Not more than 4 corners, all in the same town and range, may be recorded on this certificate.

A. Description of original monument and accessories and/or subsequent restoration:

(E3) Corner common to Sections 4-5-8-9. Original corner established by James Mullett in 1845 as follows: Set post corner of sections 4,5,8,9. Birch 24 N46E 54, Sugar 24 S50W 20. Found no subsequent record.

(E4) Quarter corner common to Sections 8-9. Original corner established by James Mullett in 1845 as follows: Set quarter section post, Sugar 12 N46E 17, Sugar 12 S36W 33. Found no subsequent record.

B. Description of corner evidence found and/or method applied in restoring or reestablishing corner:

(E3) Original post and accessories not recovered. Found no evidence of the position of the original corner on the ground. Reestablished the corner proportionate to U.S. measure between section corners 5225.93' north (rec.=80.19 ch), 5254.09' east (rec.=79.85 ch), 5213.52' south (rec.=80.00 ch), and 5275.81' west (rec.=80.18 ch). At the position for the corner, I placed a 1" I.D. x 36" iron pipe capped with a 4" diameter cast aluminum MDNR tablet, appropriately stamped.

(E4) Original post and accessories not recovered. Found no evidence of the position of the original corner on the ground. Reestablished the corner proportionate to U.S. measure, being equidistant and on a straight line between section corners 2606.76' north and south. At the position for the corner, I placed a 1" I.D. x 36" iron pipe capped with a 4" diameter cast aluminum MDNR tablet, appropriately stamped.

C. Description of monument for corner and accessories established to perpetuate locating the position of the corner.

(E3) Set a 1" ID iron pipe with a 4" MDNR cap. Blazed, scribed, and set measuring nails with tags in the following new bearing trees:

6" Oak N09W 17.9' "S5 NBT"
6" W. Pine N21E 19.15' "S4 NBT"
6" clump Maple S40E 11.45' "S9 NBT"
4" W. Pine S27W 15.8' "S8 NBT"
Placed a 6" squared and scribed cedar post adjacent. Bearings are magnetic.

(E4) Set a 1" ID iron pipe with a 4" MDNR cap. Blazed, scribed, and set measuring nails with tags in the following new bearing trees:

4" Cherry S13W 10.4' "1/4S NBT"
10" Oak S19W 38.2' "1/4S NBT"
5" Cherry S69W 22.7' "1/4S NBT"
10" Spruce N78W 28.65' "1/4S NBT"
Placed a 5" squared and scribed cedar post adjacent. Bearings are magnetic.



Signed by Stephan J. Szyszkoski Date 2-7-95

Surveyor's Michigan License No. 33986