

**SURVEY & REMONUMENTATION**

**CHIPPEWA COUNTY REMONUMENTATION CORNER**

APR 26 1995

**LAND CORNER RECORDATION CERTIFICATE**  
**Filing Requirement of Act 74, Mich. P.A. 1970**

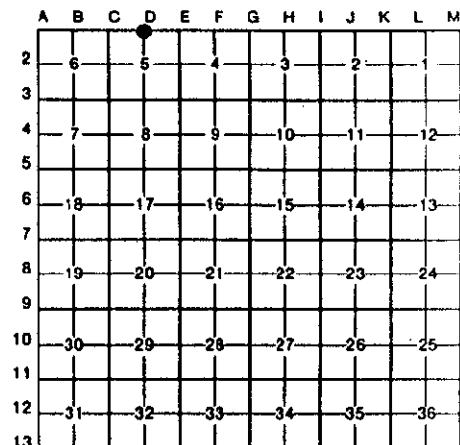
For corners in **CHIPPEWA** COMMISSION  
 (County)

Located In: Corner Code #

- |                                    |   |     |   |    |     |
|------------------------------------|---|-----|---|----|-----|
| 1. Public Land Survey              | T | 44N | R | 2W | D-1 |
|                                    | T |     | R |    |     |
|                                    | T |     | R |    |     |
|                                    | T |     | R |    |     |
| 2. Property Controlling in Section | S |     | T | R  |     |
|                                    | S |     | T | R  |     |
| 3. Miscellaneous Property in Sec.  | S |     | T | R  |     |
|                                    | S |     | T | R  |     |

\$ 7.00 LAND CORNER  
 \$ 2.00 MSSR  
 19 JAN 95 4:20 P.M. RECEIPT# 2266  
 RECEIVED FOR RECORD  
 CHIPPEWA COUNTY - STATE OF MICHIGAN  
 REGISTERED LAND SURVEYOR

4. Lot No. \_\_\_\_\_, Recorded Plat \_\_\_\_\_  
 5. Private Claims \_\_\_\_\_



I, Keith R. Waters in a field survey on December 5, 1994, do hereby certify that under requirements of P.A. 74, Michigan P.A. of 1970, the corner points mentioned in lines 1 and 2 above were in conformance with regulations and rules therefore as required in the current manual of survey instructions of the United States Department of the Interior, Bureau of Land Management or by a decree of a Court of Law and/or that the corner points mentioned in lines 3, 4 and 5 above were in conformance with the rules of the Michigan Board of Land Surveyors or by a Decree of a Court of Law; established, re-established, monumented, re-monumented, recovered, found as expressed below:

**NOTE: Not more than 4 corners, all in the same town and range, may be recorded on this certificate.**

**A. Description of original monument and accessories and/or subsequent restoration:**

D-1 North 1/4 Corner of Section 5, T44N, R2W.

Corner was not set in the original survey.

Found no evidence of subsequent establishment of this corner.

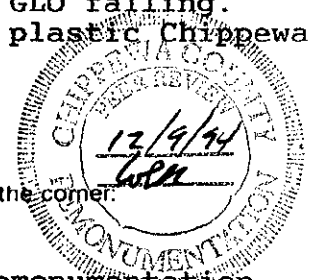


**B. Description of corner evidence found and/or method applied in restoring or reestablishing corner:**

D-1 (T44N, R2W)

This corner is being established as part of the Chippewa County Remonumentation Program.

Found remains of a wood post under the gravel surface of east-west road (18 Mile Road). Post is on line between standard section corners east and west, and is at the approximate split of right-of-way fences 66 feet apart on the north and south sides of the road. Post is 16.17 feet east of a north-south fence line in Section 32, T45N, R2W, which fits with computed GLO falling. Accepted corner position as found and set a 3/4" rebar with a plastic Chippewa County Remonumentation cap in center of wood post remains.



**C. Description of monument for corner and accessories established to perpetuate locating the position of the corner:**

D-1 (T44N, R2W)

Corner is a 3/4" x 24" rebar with a plastic Chippewa County Remonumentation cap in the centerline of east-west gravel road (18 Mile Road), 16 feet east of a fence line to the north. Witnesses:

- Power Pole (E-10), S82°E 226.55'
- 6" White Pine, S02°W 192.24'
- Power Pole (E-9), S68°W 84.43'
- 3/4" Rebar @ South 1/4 Cor. Sec. 32, WEST 16.17'

Note: Distances to poles and white pine are to a nail and tag in the side. White pine is blazed and painted. Bearings are compass bearings corrected for declination.

Signed by Keith R. Waters Date 12-23-94

Surveyor's Michigan License No. 33142