

NOV 07 1994

CHIPPEWA COUNTY REMONUMENTATION CORNER

COMMISSION

LAND CORNER RECORDATION CERTIFICATE
Filing Requirement of Act 74, Mich. P.A. 1970

For corners in
Chippewa
 (County)

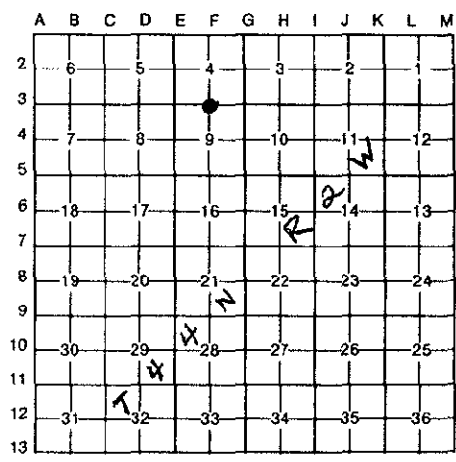
Located In: Corner Code ##

1. Public Land Survey	T <u>44N</u> R <u>2W</u>	<u>F-3</u>
	T _____ R _____	_____
	T _____ R _____	_____
	T _____ R _____	_____
2. Property Controlling in Section	S _____ T _____ R _____	_____
	S _____ T _____ R _____	_____
3. Miscellaneous Property in Sec.	S _____ T _____ R _____	_____
	S _____ T _____ R _____	_____

\$ 7.00 LAND CORNER
 \$ 2.00 MSSR
 24 OCT 94 2:24 P.M. RECEIPT# 811
 RECEIVED FOR RECORD
 CHIPPEWA COUNTY - STATE OF MICHIGAN
 SHARON H. KENNEDY, REGISTER OF DEEDS

Register of Deeds Stamp & File Number

4. Lot No. _____, Recorded Plat _____
 5. Private Claims _____



I, Larry R. Rogers, in a field survey on July 1, 19 93, do hereby certify that under requirements of P.A. 74, Michigan P.A. of 1970, the corner points mentioned in lines 1 and 2 above were in conformance with regulations and rules therefore as required in the current manual of survey instructions of the United States Department of the Interior, Bureau of Land Management or by a decree of a Court of Law and/or that the corner points mentioned in lines 3, 4 and 5 above were in conformance with the rules of the Michigan Board of Land Surveyors or by a Decree of a Court of Law; established, re-established, monumented, re-monumented, recovered, found as expressed below:

NOTE: Not more than 4 corners, all in the same town and range, may be recorded on this certificate.

A. Description of original monument and accessories and/or subsequent restoration:
(F-3) 1/4 Corner Common to Sections 4 & 9, T44N-R2W

1915 F.H. Brown, County Surveyor, reset 1/4 Corner midway and on line - which matched a fence to the South.

1969 I-75 right-of-way construction plans show distance to a drill hole filled with lead (most likely centerline of I-75 control). They do not show distances to the 1/4 Corner but indicate that the drill hole is not it.

B. Description of corner evidence found and/or method applied in restoring or reestablishing corner:
 Found no evidence of corner position. Re-established corner by Single Proportionate Measurement.



C. Description of monument for corner and accessories established to perpetuate locating the position of the corner:
 Corner is a 3/4" x 24" iron with a 3" diameter aluminum "Chippewa County Remonumentation" cap. Also a 1/2" short iron was drilled in the concrete overpass directly overhead from the corner. The corner falls 4.2' West of back of guard rail, 34.45' East of the centerline of South bound I-75, under overpass for 19 Mile Road.

Witnesses:

"X" in Northwest Bolt of Concrete Pier	N80°E	13.95'
Lead Filled Drill Hole	S40°E	13.70'
"X" in Southwest Bolt of Concrete Pier	N08°E	22.65'
Centerline South Bound I-75	West	34.45'



Signed by _____ Date 10 OCT 1994 141-136
 Surveyor's Michigan License No. 29251

NOTE: Bearings are compass bearings corrected for declination.
 Distances are to a nail in side of witness objects unless noted.