

MAR 10 1999

SECTION

LAND CORNER RECORDATION CERTIFICATE
Filing Requirement of Act 74, Mich. P.A. 1970
Chippewa County Remonumentation Corner

For corners in

Table with columns: Chippewa County, Located in:, Corner Code #. Rows include Public Land Survey, Property Controlling in Section, Miscellaneous Property in Sec., Lot No., and Private Claims.

\$7.00 LAND CORNER
\$2.00 MSSR
5 MAR 1999 2:07:38 PM Receipt #14029
RECEIVED FOR RECORD
CHIPPEWA COUNTY - STATE OF MICHIGAN
SHARON H. KENNEDY, REGISTER OF DEEDS

BOOK 11 PAGE 23
Register of Deeds Stamp & File Number

I, Keith R. Waters, in a field survey on November 13, 1998, do hereby state that under requirements of P.A. 74, Michigan P.A. of 1970, the corner points mentioned in lines 1 and 2 above were in conformance with regulations and rules therefore as required in the current manual of survey instructions of the United States Department of the Interior, Bureau of Land Management or by a decree of a Court of Law and /or that the corner points mentioned in lines 3, 4 and 5 above were in conformance with the rules of the Michigan Board of Land Surveyors or by a Decree of a Court of Law; established, re-established, monumented, recovered, found as expressed below:

NOTE: Not more than 2 corners, all in the same town and range, may be recorded on this certificate.

A. Description of original monument and accessories and/or subsequent restoration:

G-4 1/4 Corner Common to Sections 9 & 10, T44N, R2W

1845 - Original corner established by James Mullett.

Witnesses: Birch 10, N34°W 18 links - Tamarack 8, S19°E 09 links.

1897 - Chippewa County Surveyor Frederick H. Brown, RLS 944, sketch of Section 10 shows distances on the west line of 2641 feet for the north 1/2 mile and 2643 feet for the south 1/2 mile.

1915 - Brown's notes for Section 9 show the same distances as the 1897 notes.

B. Description of corner evidence found and/or method applied in restoring or reestablishing corner:

This corner is being reestablished as part of the Chippewa County Remonumentation Program.

Found no evidence of the original corner. Reestablished corner on line between section corner G-3 to the north and section corner G-5 to the south, at the pro-rated distance according to the above mentioned County Surveyor notes.

The distance between said section corners G-3 and G-5 is within 1.65 feet of the record County Surveyor distance. Corner falls on the extension of a fence line to the east.

C. Description of monument for corner and accessories established to perpetuate locating the position of the corner:

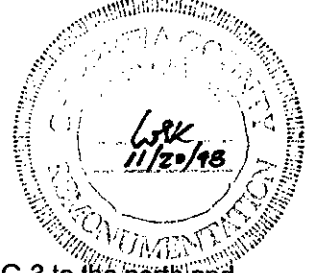
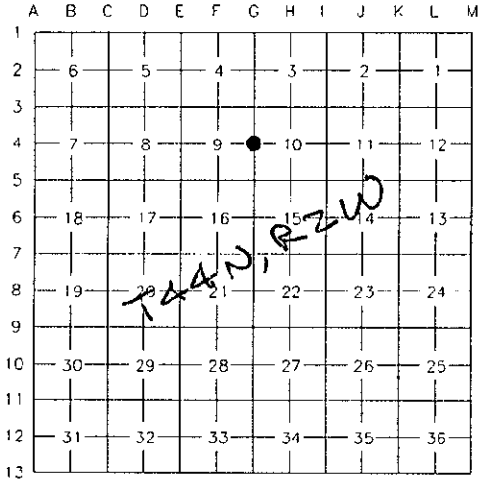
Placed a 3/4" x 24" rebar with a plastic Chippewa County Remonumentation cap at the corner location, which falls 1'± west of the centerline of Hantz Road, on the extension of a fence line to the east. Witnesses:

Nail and plastic witness tag #33142 in side of Power Pole, N04°W 323.49'

Nail and plastic witness tag #33142 in side of Power Pole, S22°W 82.15'

Nail and plastic witness tag #33142 in side of Corner Fence Post, EAST 42.68'

"V" Notch cut in top east end of 36" CMP Culvert, N70°E 23.97'



Signed by Keith R. Waters

Date 12-30-98

Surveyor's Michigan License No. 33142