

SURVEY & REMONUMENTATION

APR 26 1995

CHIPPEWA COUNTY REMONUMENTATION CORNER

COMMISSION

LAND CORNER RECORDATION CERTIFICATE
Filing Requirement of Act 74, Mich. P.A. 1970

For corners in
Chippewa

(County)

Located In:

Corner Code #

- | | | |
|---------------------------------------|--------------------------|------------|
| 1. Public Land Survey | T <u>45N</u> R <u>1W</u> | <u>G-8</u> |
| | T _____ R _____ | _____ |
| | T _____ R _____ | _____ |
| | T _____ R _____ | _____ |
| 2. Property Controlling in Section | S _____ T _____ R _____ | _____ |
| | S _____ T _____ R _____ | _____ |
| 3. Miscellaneous Property in Sec. | S _____ T _____ R _____ | _____ |
| | S _____ T _____ R _____ | _____ |
| 4. Lot No. _____, Recorded Plat _____ | | |
| 5. Private Claims _____ | | |

\$ 7.00 LAND CORNER
\$ 2.00 MSSR
5 DEC 94 12:34 P.M. RECEIPT# 1520
RECEIVED FOR RECORD
CHIPPEWA COUNTY - STATE OF MICHIGAN
SHARON H. KENNEDY, REGISTER OF DEEDS
Register of Deeds Stamp & File Number

I, Keith R. Waters, in a field survey on July 20, 19 94, do hereby certify that under requirements of P.A. 74, Michigan P.A. of 1970, the corner points mentioned in lines 1 and 2 above were in conformance with regulations and rules therefore as required in the current manual of survey instructions of the United States Department of the Interior, Bureau of Land Management or by a decree of a Court of Law and/or that the corner points mentioned in lines 3, 4 and 5 above were in conformance with the rules of the Michigan Board of Land Surveyors or by a Decree of a Court of Law; established, re-established, monumented, re-monumented, recovered, found as expressed below.

NOTE: Not more than 4 corners, all in the same town and range, may be recorded on this certificate.

A. Description of original monument and accessories and/or subsequent restoration:

G-8 1/4 Corner Common to Sections 21 & 22, T45N, R1W.

Original ties to post: Maple 10, N65°E 13 links
Birch 12, S31°W 10 links

Found no evidence of subsequent restoration of corner.

B. Description of corner evidence found and/or method applied in restoring or reestablishing corner:

G-8 (T45N, R1W)

This corner is being re-established as part of the Chippewa County Remonumentation Program.

Found no evidence of corner or its accessories. Re-established corner by single proportionate measurement on line between section corners 2646.25 feet north and 2646.25 feet south.

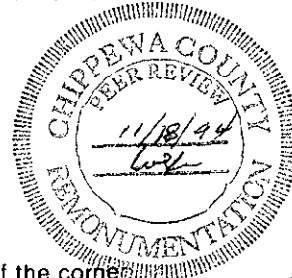
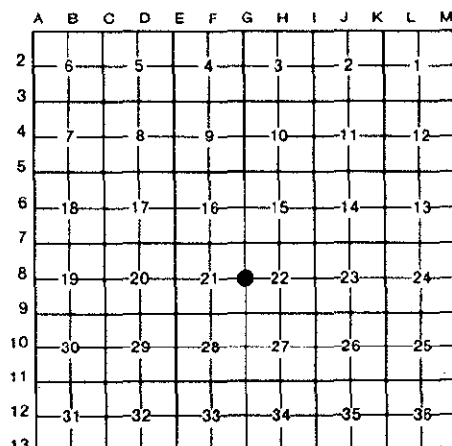
C. Description of monument for corner and accessories established to perpetuate locating the position of the corner:

G-8 (T45N, R1W)

Corner is a 3/4" x 24" rebar with 3 1/4" aluminum Chippewa County Remonumentation cap in a swampy area. Witnesses:

- 8" Spruce, N62°E 28.16'
- 9" Spruce, S42°E 10.79'
- 8" Spruce, N69°W 21.17'
- 6" Spruce, N14°E 22.81'

Note: Distances are to a nail and tag in the side of the tree. Trees are blazed and painted. Bearings are compass bearings corrected for declination.



Signed by Keith R. Waters

Date 12-1-94

Surveyor's Michigan License No. 33142