

**LAND CORNER RECORDATION CERTIFICATE**  
 Filing Requirement of Act 74, Mich. P.A. 1970

For corners in

Chippewa

(County)

Located In:

Corner Code #

1. Public Land Survey

T \_\_\_ R \_\_\_  
 T \_\_\_ R \_\_\_  
 T \_\_\_ R \_\_\_  
 T \_\_\_ R \_\_\_

2. Property Controlling in Section

S 18 T 45 R 2W 1  
 S 18 T 45 R 2W 14

3. Miscellaneous Property in Sec.

S \_\_\_ T \_\_\_ R \_\_\_  
 S \_\_\_ T \_\_\_ R \_\_\_

Register of Deeds Stamp & File Number

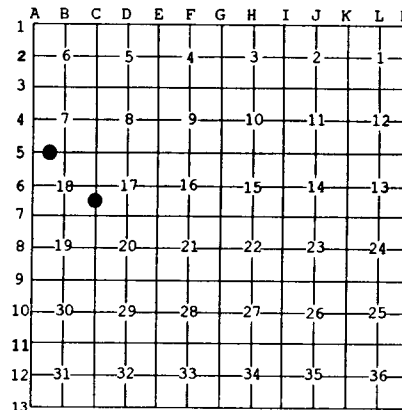
4. Lot No. \_\_\_\_\_, Recorded Plat \_\_\_\_\_

5. Private Claims \_\_\_\_\_

14 Jan 31 2002  
 1 Dec 06 2001

I, Stephan J. Szyszkoski, in a field survey on \_\_\_\_\_, 19\_\_\_\_ do hereby state that under requirements of P.A. 74, Michigan P.A. of 1970, the corner points mentioned in lines 1 and 2 above were in conformance with regulations and rules therefore as required in the current manual of survey instructions of the United States Department of the Interior, Bureau of Land Management or by a decree of a Court of Law and /or that the corner points mentioned in lines 3, 4 and 5 above were in conformance with the rules of the Michigan Board of Land Surveyors or by a Decree of a Court of Law; established, re-established, monumented, recovered, found as expressed below.

NOTE: Not more than 2 corners, all in the same town and range, may be recorded on this certificate.



**A. Description of original monument and accessories and/or subsequent restoration:**

(1-Sec. 18) West 1/16 corner between Sections 7 and 18. Not established in the original survey.  
 (14-Sec. 18) South 1/16 corner between Sections 17 and 18. Not established in the original survey.

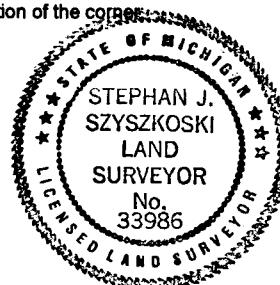
**B. Description of corner evidence found and/or method applied in restoring or reestablishing corner:**

(1-Sec. 18) Established the corner 20 chains, proportionate to the original record, west of the Quarter corner and on a line of mean true bearing between the Quarter corner and the Section corner. the Quarter corner is 1318.12' east and the Section corner is 1314.82' west. The Quarter corner is described on a certificate of survey by R.Bischer RLS 22428 dated 17 July 2000, and recorded in Liber 805, Page 293, Chippewa County Records.

(14-Sec. 18) Recovered a 1/2" dia. rebar with plastic cap "LRR 29251", in proper position, set flush with the paved surface of Tilson Rd. Accepted same as a careful and faithful determination of the position of the corner.

**C. Description of monument for corner and accessories established to perpetuate locating the position of the corner:**

(1) Set 1" IDx36" I. Pipe with 4" alum. MDNR cap. Blazed, scribed, and set meas. nails in:	(14) Fd. 1/2" rebar with plastic cap #29251. Set meas. nails with tags in:
4" Spruce N22E 4.1'	10" Oak S42E 42.4'
10" W. Birch S68E 35.95'	12" Oak S80E 32.45'
10" Spruce S35E 32.5'	5" twin Oak N66E 39.8'
14" Cedar S16W 46.4'	Util. Pole RU2/157B16U N89W 36.3'
Cedar post adjacent. Bearings are magnetic. Distances to nail with tag.	Bearings are magnetic. Distances are to nail with tag.



Signed by Stephan J. Szyszkoski  
 Surveyor's Michigan License No. 33986

Date 2/14/02

For the Michigan Department of Natural Resources - Office of Property Management