

LAND CORNER RECORDATION CERTIFICATE
Filing Requirement of Act 74, Mich. P.A. 1970
Chippewa County Remonumentation Corner

SECTION

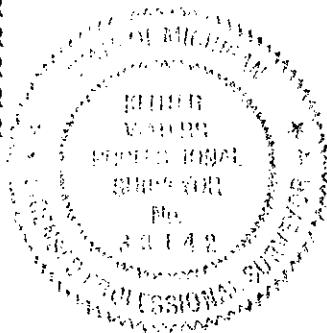
For corners in

Chippewa County	Located in:	Corner Code #
1. Public Land Survey	T46N R7W T45N R7W T R T R T R	L-13 L-1 Same Corner
2. Property Controlling in Section	S T R	
3. Miscellaneous Property in Sec.	S T R	
4. Lot No. , Recorded Plat		
5. Private Claims		

BOOK 11 PAGE 123

\$7.00 LAND CORNER
 \$2.00 MSSR
 23 FEB 2000 4:42:01 PM Receipt #21175
 RECEIVED FOR RECORD
 CHIPPEWA COUNTY - STATE OF MICHIGAN
 SHARON H. KENNEDY, REGISTER OF DEEDS

Register of Deeds Stamp & File Number



	A	B	C	D	E	F	G	H	I	J	K	L	M
1													
2	6	5	4	3	2	1							
3													
4	7	8	9	10	11	12							
5													
6	18	17	16	15	14	13							
7													
8	19	20	21	22	23	24							
9													
10	30	29	28	27	26	25							
11													
12	31	32	33	34	35	36							
13													

I, Keith R. Waters, in a field survey on December 14, 1999, do hereby state that under requirements of P.A. 74, Michigan P.A. of 1970, the corner points mentioned in lines 1 and 2 above were in conformance with regulations and rules therefore as required in the current manual of survey instructions of the United States Department of the Interior, Bureau of Land Management or by a decree of a Court of Law and /or that the corner points mentioned in lines 3, 4 and 5 above were in conformance with the rules of the Michigan Board of Land Surveyors or by a Decree of a Court of Law; established, re-established, monumented, recovered, found as expressed below:

NOTE: Not more than 2 corners, all in the same town and range, may be recorded on this certificate.

A. Description of original monument and accessories and/or subsequent restoration:

L-13 (L-1) 1/4 Corner Common to Sec. 1, T45N, R7W & Sec. 36, T46N, R7W

1840 - Original corner established by Austin Burt.

Witnesses: Beech 16, N75°E 07 links - Beech 8, N72°W 19 links.

1917 - Chippewa County Surveyor's notes indicate an original corner at this location.

1936 - GLO Dependent Resurvey of T46N, R6W. Notes indicate "there is no remaining evidence of the 1/4 section corner." A line was run from the township corner at M-13 to the original 1/4 corner at J-13.

B. Description of corner evidence found and/or method applied in restoring or reestablishing corner:

This corner is being reestablished as part of the Chippewa County Remonumentation Program.

Found no evidence of the original corner. Reestablished corner by single proportionate measurement on the township line between recovered corners at M-13 and J-13.

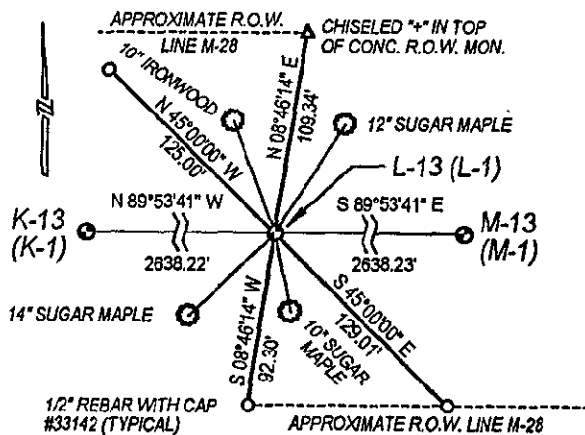
C. Description of monument for corner and accessories established to perpetuate locating the position of the corner:

Set a "Mag Nail" at the corner location, which falls in the eastbound lane of Highway M-28, 7.7 feet south of the existing centerline. Also established reference monuments as shown in sketch below.

Witnesses to "Mag Nail":

- 10" Sugar Maple, S11°57'55"E 42.74'
- 14" Sugar Maple, S45°34'46"W 63.14'
- 12" Sugar Maple, N31°56'30"E 69.17'
- 10" Ironwood, N20°21'17"W 64.29'

Note: Bearings and distances are from the section corner to the head of a nail and tag #33142 in the side of the witness object. Bearings are in relation to the sketch to right.



Signed by Keith R. Waters

Date 12-29-99

Surveyor's Michigan License No. 33142