

MICHIGAN
DEPARTMENT OF CONSERVATION
FORESTRY DIVISION

LAND CORNER RECORD

T. 45-46N N.R. 7W

Chippewa COUNTY

DESCRIPTION OF CORNER Section corner common to sections 2-3-34-35

CORNER MONUMENT 1" pipe with 4" aluminum cap

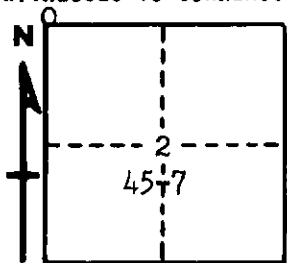
DATE MONUMENT PLACED AND WITNESSED 9-27-62

WITNESSES TO CORNER..... 8" Cedar (S35 NBT) N42°E, 17 links

8" Cedar (S3 NBT) S20°W, 20½ links

7" Cedar (S34 NBT) N69°W, 34 links

AND



CIRCLE CORNER REGISTERED

DESCRIPTION IN DETAIL AS TO HOW CORNER WAS LOCATED AND IDENTIFIED OR RESTORED.

This corner re-established by Single Proportionate measure between corners; 1/2 mile east; 1 mile west.
Found numerous blazes but no evidence of original corner.

SURVEYOR'S SEAL

SIGNED Billy D. Buckler DATE March 7, 1963
REGISTERED LAND SURVEYOR

Billy D. Buckler