

MICHIGAN  
DEPARTMENT OF CONSERVATION  
FORESTRY DIVISION

# LAND CORNER RECORD

T. 45-46N R.R. 7W

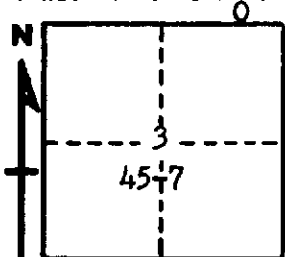
Chippewa COUNTY

DESCRIPTION OF CORNER East 1/8 corner between sections 3-34

CORNER MONUMENT 1" pipe with 4" aluminum cap

DATE MONUMENT PLACED AND WITNESSED 9-27-62

WITNESSES TO CORNER..... 9" Cedar (BT) N 85°W, 22 links



8" Cedar (BT) S30°W, 22 1/2 links

AND

CIRCLE CORNER REGISTERED

DESCRIPTION IN DETAIL AS TO HOW CORNER WAS LOCATED AND IDENTIFIED OR RESTORED.

This corner placed midway between section corner to east and 1/4 corner to west.

SURVEYOR'S SEAL

SIGNED Billy D. Buckler DATE March 7, 1963  
REGISTERED LAND SURVEYOR  
Billy D. Buckler