

MICHIGAN
DEPARTMENT OF CONSERVATION
FORESTRY DIVISION

LAND CORNER RECORD

T. 45N N.R. 7W

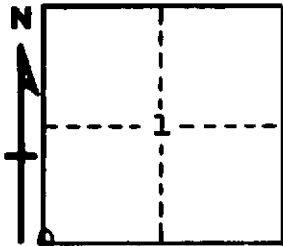
Chippewa COUNTY

DESCRIPTION OF CORNER Sec. Cor. common to Secs. 1-2-11-12

CORNER MONUMENT 1" pipe with 4" aluminum cap

DATE MONUMENT PLACED AND WITNESSED 5-20-69

WITNESSES TO CORNER..... 7" Hard Maple (S12 NBT) S38°E 12.6'



CIRCLE CORNER REGISTERED

6" Hard Maple (S11 NBT) S82°W 5.9'

7" Hard Maple (S1 NBT) N19°E 17.5'

AND

DESCRIPTION IN DETAIL AS TO HOW CORNER WAS LOCATED AND IDENTIFIED OR RESTORED.

This corner replaced from one probably bearing tree; a hard maple bearing S11°W, 40 links; tree is down and deteriorated. Found old chopping where someone has searched for witness marks. Found a 10" balsam, down, with old chopped blazes facing to the corner location. This appears to be very old, bears S30°E 14.8'

SURVEYOR'S SEAL

SIGNED Billy D. Buckler
REGISTERED LAND SURVEYOR

DATE 8-28-69