

MAR 27 1996

CHIPPEWA COUNTY REMONUMENTATION CORNER

COMMISSION

LAND CORNER RECORDATION CERTIFICATE

Filing Requirement of Act 74, Mich. P.A. 1970 \$ 7.00 LAND CORNER

For corners in

Chippewa (County)

Located In:

Corner Code #

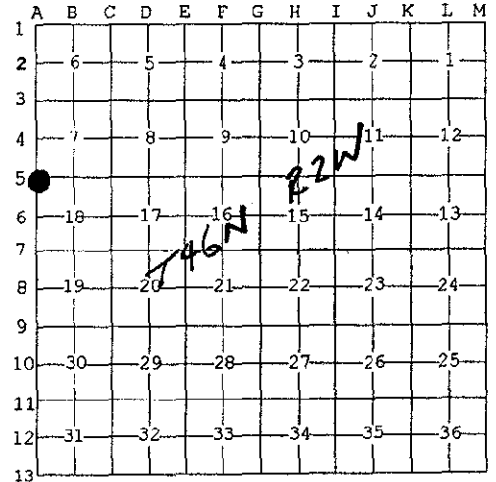
- 1. Public Land Survey T46N R 2W (A-5) Same T46N R 3W (M-5) Corner
2. Property Controlling in Section S T R
3. Miscellaneous S T R
Property in Sec. S T R

\$ 2.00 MSSR
29 FEB 96 9:27 A.M. RECEIPT# 462
RECEIVED FOR RECORD
CHIPPEWA COUNTY - STATE OF MICHIGAN
SHARON H. KENNEDY, REGISTER OF DEEDS

Register of Deeds Stamp & File Number

- 4. Lot No. Recorded Plat
5. Private Claims

I, William L. Karr, in a field survey on Dec. 13, 19 95 do hereby state that under requirements of P.A. 74, Michigan P.A. of 1970, the corner points mentioned in lines 1 and 2 above were in conformance with regulations and rules therefore as required in the current manual of survey instructions of the United States Department of the Interior, Bureau of Land Management or by a decree of a Court of Law and/or that the corner points mentioned in lines 3, 4 and 5 above were in conformance with the rules of the Michigan Board of Land Surveyors or by a Decree of a Court of Law; established, re-established, monumented, recovered, found as expressed below:



NOTE: Not more than 2 corners, all in the same town and range, may be recorded on this certificate.

A. Description of original monument and accessories and/or subsequent restoration:

(A-5) Section Corner 7 & 18, T46N, R2W and 12 & 13, T46N, R3W (M-5)

1840: Austin Burt set post

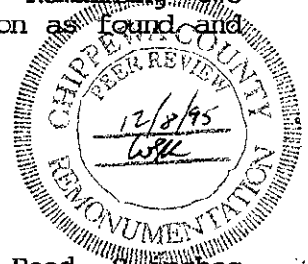
Birch 10" S30°W 58 links Sugar 10" N31°W 21 links

1977: J.H. Granger, P.S. 16041 found a cedar post with a 3/4" iron pin in center, 3.5 feet below road surface. Re-set 1/2" x 24" iron with cap at road surface. Corner was recorded in Liber 1, Page 251.

B. Description of corner evidence found and/or method applied in restoring or reestablishing corner:

(A-5) This corner is being perpetuated as part of the Chippewa County Remonumentation program.

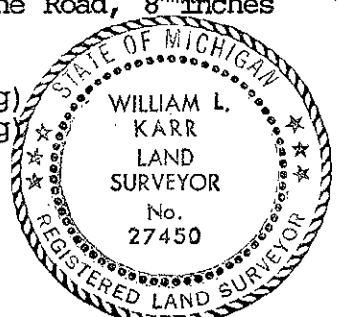
Found 1/2" iron as described in 1977. Three witnesses were gone. Remaining two witnesses were somewhat short of 1977 distance. Accepted corner position as found and established new witnesses.



C. Description of monument for corner and accessories established to perpetuate locating the position of the corner:

(A-5) Corner is a 1/2" iron 2.5 feet West of centerline of Irish Line Road, 8 inches below grade.

- Witnesses: Fence Post N52°W 42.99' (existing)
Large Rock w/chisled "X" N62°W 38.15' (existing)
Power Pole (#15/A) S37°W 127.93'
Power Pole (#15-1) N12°E 200.19'
Power Pole (#BR1/15) S19°E 96.56'



Signed by William L. Karr
Surveyor's Michigan License No. 27450

Date 12/13/95

NOTE: Bearings are compass bearings corrected for declination. Distances are to a nail in side of witness objects unless noted. FORM APPROVED BY MICHIGAN STATE BOARD OF PROFESSIONAL SURVEYORS, JAN. 28, 1971 REVISED MAY 14, 1975 REVISED JAN., 1983 REVISED OCT., 1985