

SURVEY &  
REMONUMENTATION

MAY 28 1997

COMMISSION

CHIPPEWA COUNTY REMONUMENTATION CORNER

LAND CORNER RECORDATION CERTIFICATE  
Filing Requirement of Act 74, Mich. P.A. 1970 \$7.00 LAND CORNER

For corners in

Chippewa (County)	Located In:	Corner Code #
1. Public Land Survey	T <sup>46N</sup> R <sup>2W</sup>	C-6
	T___ R___	_____
	T___ R___	_____
	T___ R___	_____
2. Property Controlling in Section	S___ T___ R___	_____
	S___ T___ R___	_____
3. Miscellaneous Property in Sec.	S___ T___ R___	_____
	S___ T___ R___	_____

\$2.00 MSSR  
3/4/1997 2:08:15 PM Receipt #294  
RECEIVED FOR RECORD  
CHIPPEWA COUNTY - STATE OF MICHIGAN  
SHARON H. KENNEDY, REGISTER OF DEEDS

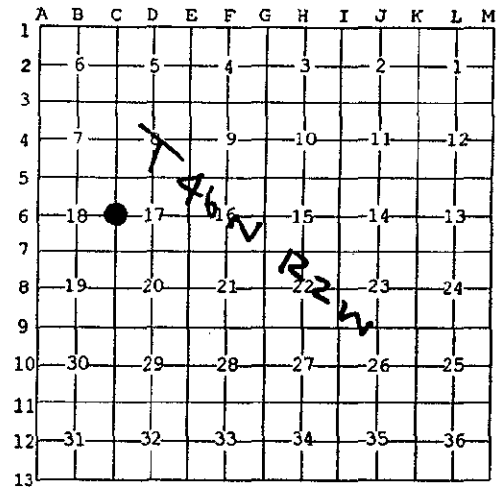
BOOK 10 PAGE 64

Register of Deeds Stamp & File Number

4. Lot No. \_\_\_\_\_, Recorded Plat \_\_\_\_\_  
5. Private Claims \_\_\_\_\_

I, William L. Karr, in a field survey on Dec. 3, 1996 do hereby state that under requirements of P.A. 74, Michigan P.A. of 1970, the corner points mentioned in lines 1 and 2 above were in conformance with regulations and rules therefore as required in the current manual of survey instructions of the United States Department of the Interior, Bureau of Land Management or by a decree of a Court of Law and /or that the corner points mentioned in lines 3, 4 and 5 above were in conformance with the rules of the Michigan Board of Land Surveyors or by a Decree of a Court of Law; established, re-established, monumented, recovered, found as expressed below:

NOTE: Not more than 2 corners, all in the same town and range, may be recorded on this certificate.

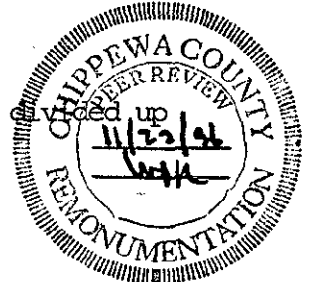


A. Description of original monument and accessories and/or subsequent restoration:

(C-6) 1/4 Corner Common to Sections 17 & 18, T.46 N., R.2 W.

1849: H. Mellen set post Y. Birch 14 S09°W 26  
W. Pine 16 N28°W 54

1935: A.H. Colwell, County Surveyor ran line between Sections 17 & 18 and evenly. 1316' for each for a total mile of 5264'.



B. Description of corner evidence found and/or method applied in restoring or reestablishing corner:

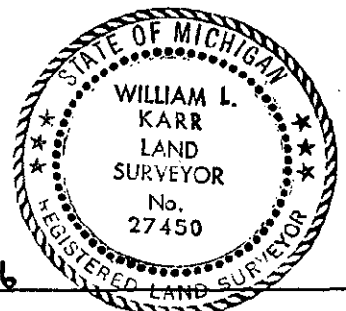
(C-6) This Corner is being re-established as part of the Chippewa County Remonumentation Program.

Found no evidence of original corner. Found remains of an East-West fence line 2642.60' North of Section corner 17, 18, 19 & 20. North 1/2 mile measured 2614.55'. Based on 1935 survey, we re-established corner mid-way and on-line between Section corners. Corner falls approximately 14'± South of fence. Distance South to Section corner 17, 18, 19 & 20 is 2628.58' (2632' - 1935).

C. Description of monument for corner and accessories established to perpetuate locating the position of the corner:

(C-6) Corner is a 3/4" x 24" iron with plastic Chippewa County Remonumentation cap. Corner falls 14'± South of old East-West fence line .

Witnesses:	5" Lone Spruce	N16°E	124.33'
	3/4" iron pipe w/cap	S33°E	36.22'
	3/4" iron pipe w/cap	S55°W	41.84'
	5" Poplar	N09°W	45.50'



Signed by William L. Karr  
Surveyor's Michigan License No. 27450

Date 12-30-96

NOTE: All bearings are compass bearings corrected for declination. All distances are to a nail in side of witness objects unless noted.