

SURVEY & REMONUMENTATION

MAY 28 1997

CHIPPEWA COUNTY REMONUMENTATION CORNER

COMMISSION

LAND CORNER RECORDATION CERTIFICATE

Filing Requirement of Act 74, Mich. P.A. 1970 \$7.00 LAND CORNER

For corners in

Chippewa
(County)

Located In:

Corner Code #

1. Public Land Survey	T <u>46</u> N	R <u>2</u> W	D-3
	T _____	R _____	_____
	T _____	R _____	_____
	T _____	R _____	_____
2. Property Controlling in Section	S _____	T _____	R _____
	S _____	T _____	R _____
3. Miscellaneous Property in Sec.	S _____	T _____	R _____
	S _____	T _____	R _____

\$2.00 MSSR
3/4/1997 2:09:51 PM Receipt #294
RECEIVED FOR RECORD
CHIPPEWA COUNTY - STATE OF MICHIGAN
SHARON H. KENNEDY, REGISTER OF DEEDS

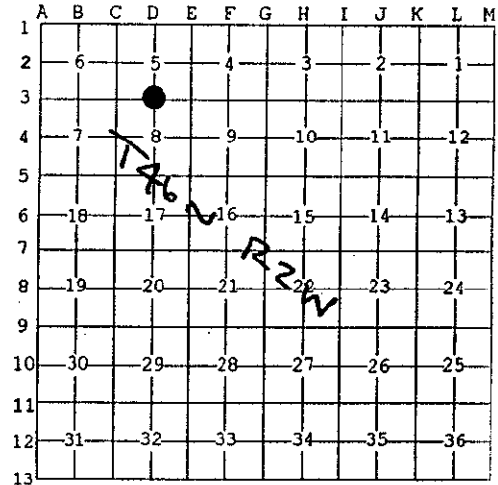
BOOK **10** PAGE **66**

Register of Deeds Stamp & File Number

4. Lot No. _____, Recorded Plat _____
5. Private Claims _____

I, William L. Karr, in a field survey on Dec. 19, 1996 do hereby state that under requirements of P.A. 74, Michigan P.A. of 1970, the corner points mentioned in lines 1 and 2 above were in conformance with regulations and rules therefore as required in the current manual of survey instructions of the United States Department of the Interior, Bureau of Land Management or by a decree of a Court of Law and for that the corner points mentioned in lines 3, 4 and 5 above were in conformance with the rules of the Michigan Board of Land Surveyors or by a Decree of a Court of Law; established, re-established, monumented, recovered, found as expressed below:

NOTE: Not more than 2 corners, all in the same town and range, may be recorded on this certificate.



A. Description of original monument and accessories and/or subsequent restoration:

(D-3) 1/4 Corner Common to Sections 5 & 8, T.46 N., R.2 W.
1849: H. Mellen set post Cedar 9 N65°E 16
Y. Birch 10 S54°W 31

1987: W.L. Karr, P.S. 27450 found no evidence of original corner. Re-established corner mid-way and on-line between Northwest and Northeast corners of Section 8. Corner was recorded In Liber 7, Page 10 of the Chippewa County Corner Records.

B. Description of corner evidence found and/or method applied in restoring or reestablishing corner:

(D-3) This Corner is being re-established as part of the Chippewa County Remonumentation Program.

Found no evidence of original corner. The corner set in 1987 was destroyed during a re-surfacing project on Crawford Street in the summer of 1996. The corner was re-established mid-way and on-line between Northwest and Northeast corners of Section 8.

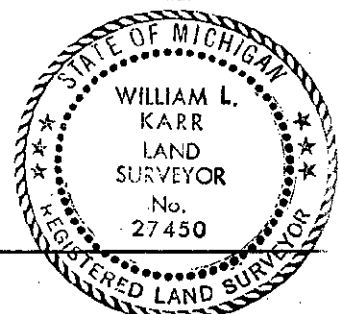
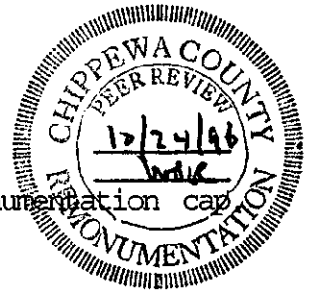
C. Description of monument for corner and accessories established to perpetuate locating the position of the corner:

(D-3) Corner is a 3/4" x 24" iron with plastic Chippewa County Remonumentation cap
Corner falls 3.0' North of the centerline of Crawford Street.

Witnesses:	1/2" iron	N45°E	45.00'	
	Power pole (#E-37)	S70°E	108.81'	(existing)
	Corner fence post	S74°W	100.42'	
	1/2" iron	N45°W	45.00'	

Signed by William L. Karr
Surveyor's Michigan License No. 27450

Date 12-30-96



NOTE: All bearings are compass bearings corrected for declination. All distances are to a nail in side of witness objects unless noted.