

SURVEY &
REMONUMENTATION

MAY 28 1997

CHIPPEWA COUNTY REMONUMENTATION CORNER

COMMISSION

LAND CORNER RECORDATION CERTIFICATE
Filing Requirement of Act 74, Mich. P.A. 1970

For corners in

<u>Chippewa</u> (County)	Located In:	Corner Code #
1. Public Land Survey	T <u>46</u> N R <u>2</u> W	E-4
	T ___ R ___	_____
	T ___ R ___	_____
	T ___ R ___	_____
2. Property Controlling In Section	S ___ T ___ R ___	_____
	S ___ T ___ R ___	_____
3. Miscellaneous Property in Sec.	S ___ T ___ R ___	_____
	S ___ T ___ R ___	_____

\$7.00 LAND CORNER

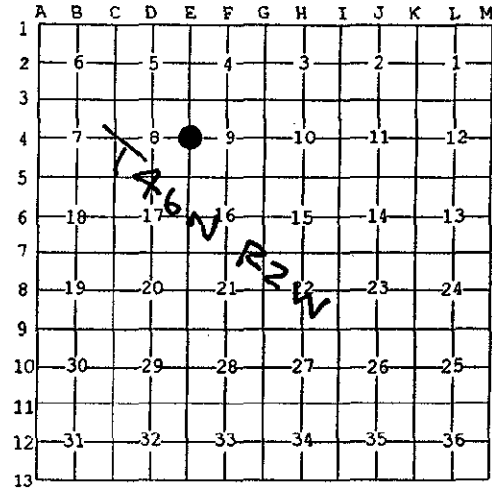
\$2.00 NSSR
3/4/1997 2:18:19 PM Receipt #294
RECEIVED FOR RECORD
CHIPPEWA COUNTY - STATE OF MICHIGAN
SHARON H. KENNEDY, REGISTER OF DEEDS

BOOK 10 PAGE 73

Register of Deeds Stamp & File Number

4. Lot No. _____, Recorded Plat _____
5. Private Claims _____

I, William L. Karr, in a field survey on Nov. 25, 1996 do hereby state that under requirements of P.A. 74, Michigan P.A. of 1970, the corner points mentioned in lines 1 and 2 above were in conformance with regulations and rules therefore as required in the current manual of survey instructions of the United States Department of the Interior, Bureau of Land Management or by a decree of a Court of Law and/or that the corner points mentioned in lines 3, 4 and 5 above were in conformance with the rules of the Michigan Board of Land Surveyors or by a Decree of a Court of Law; established, re-established, monumented, recovered, found as expressed below:



NOTE: Not more than 2 corners, all in the same town and range, may be recorded on this certificate.

A. Description of original monument and accessories and/or subsequent restoration:

(E-4) 1/4 Corner Common to Sections 8 & 9, T.46 N., R.2 W.

1849: H. Mellen set post Cedar 10 N50°E 25 W. Pine 10 S55°W 7

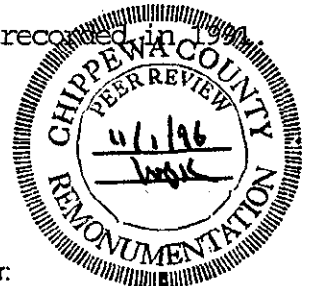
1969: Corner noted on M.D.O.T. Highway plans for M-221 shows as mid-way between the Northeast and Southeast corners of Section 8.

1991: L.E. Weinreis, P.S. 32343 re-established corner mid-way and on-line between the Northeast and Southeast corners of Section 8. Distance North to the Northeast corner of Section 8 checked well with the Plat of the Village of Superior in Liber 1, Page 45 Plats. Corner recorded in Liber 7, Page 323 of the Chippewa County Corner Records.

B. Description of corner evidence found and/or method applied in restoring or reestablishing corner:

(E-4) This Corner is being perpetuated as part of the Chippewa County Remonumentation Program.

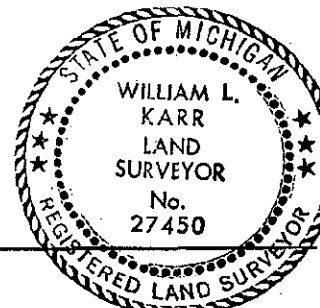
Found no evidence of original survey. Found corner and all witnesses as recorded in 1996.
Accepted corner position as found.



C. Description of monument for corner and accessories established to perpetuate locating the position of the corner:

(E-4) Corner is a 1/2" iron with cap No. 32343. Corner falls 0.7' West of the centerline of M-221; on the centerline of a road to the East and 20' North of the centerline of a road to the West.

Witnesses:	Power pole	N77°E 107.02'
	12" Apple	S66°E 98.45'
	Power pole (#E38/15A)	S72°W 66.62'
	S.E. foundation corner Baptist Church	N50°W 122.46'



Signed by William L. Karr
Surveyor's Michigan License No. 27450

Date 12-30-96

NOTE: All bearings are compass bearings corrected for declination. All distances are to a nail in side of witness objects unless noted.