

CHIPPEWA COUNTY REMONUMENTATION CORNER

MAR 27 1996

LAND CORNER RECORDATION CERTIFICATE
Filing Requirement of Act 74, Mich. P.A. 1970

COMMISSION

For corners in

<u>Chippewa</u> (County)	Located In:	Corner Code #
1. Public Land Survey	<u>T46N R2W</u>	<u>G-7</u>
	T ___ R ___	_____
	T ___ R ___	_____
	T ___ R ___	_____
2. Property Controlling in Section	S ___ T ___ R ___	_____
	S ___ T ___ R ___	_____
3. Miscellaneous Property in Sec.	S ___ T ___ R ___	_____
	S ___ T ___ R ___	_____

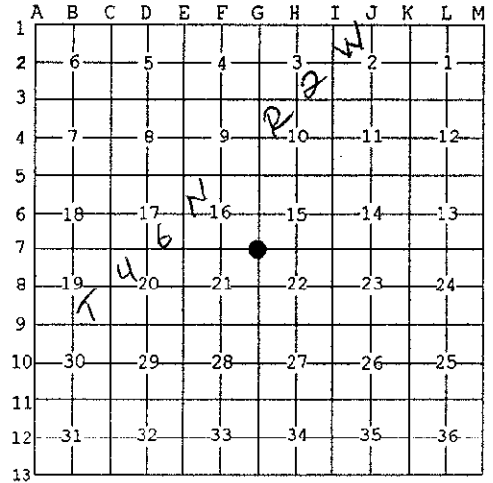
\$ 7.00 LAND CORNER
\$ 2.00 MSSR
29 FEB 96 9:31 A.M. RECEIPT# 462
RECEIVED FOR RECORD
CHIPPEWA COUNTY - STATE OF MICHIGAN
SHARON H. KENNEDY, REGISTER OF DEEDS

Register of Deeds Stamp & File Number

4. Lot No. _____, Recorded Plat _____
5. Private Claims _____

I, Larry R. Rogers, in a field survey on Oct. 10, 19 95 do hereby state that under requirements of P.A. 74, Michigan P.A. of 1970, the corner points mentioned in lines 1 and 2 above were in conformance with regulations and rules therefore as required in the current manual of survey instructions of the United States Department of the Interior, Bureau of Land Management or by a decree of a Court of Law and/or that the corner points mentioned in lines 3, 4 and 5 above were in conformance with the rules of the Michigan Board of Land Surveyors or by a Decree of a Court of Law; established, re-established, monumented, recovered, found as expressed below.

NOTE: Not more than 2 corners, all in the same town and range, may be recorded on this certificate.



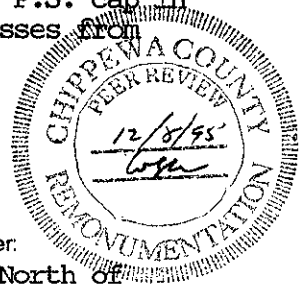
A. Description of original monument and accessories and/or subsequent restoration:

(G-7) Southeast Corner of Section 16, T46N, R2W
1849: Harvey Mellen "set Y. Birch post at corner of Secs. 15, 16, 21 & 22" with following witnesses: 10" Spruce S72E 25 links 12" Y. Birch N74W 37 links
1987: Neil E. Hill, P.S. 27447, found iron pin with P.S. cap in monument box, 7.7 feet North of centerline of State Highway M-28 as referenced in 1941 Highway Plans (S-11-4-1) and recorded in Liber 7, Page 83 of the Chippewa County Corner Records with the following witnesses: P.K. Nail in Parking Lot N15°E 51.62' Power Pole S30°E 100.05' Chis. "X" in Conc. Hdwl. N30°W 37.49' Top center Conc. R/W Marker N30°W 83.56'

B. Description of corner evidence found and/or method applied in restoring or reestablishing corner:

(G-7) This corner is being perpetuated as part of Chippewa County Remonumentation program.

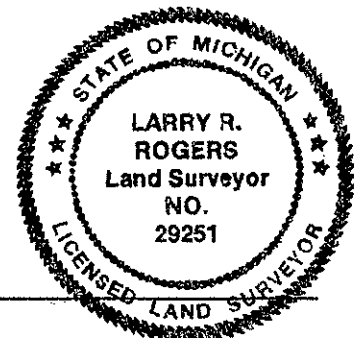
Found no evidence of original corner position. Found 1/2" iron pin with P.S. cap in monument box, 7.7 feet North of centerline of M-28. Recovered two witnesses from previous recording. Established two new witnesses.



C. Description of monument for corner and accessories established to perpetuate locating the position of the corner:

(G-7) Corner is 1/2" iron pin with cap #29251 in monument box, 7.7 feet North of centerline of State Highway M-28.

Witnesses: Utility Pole (DR4/129/P)	N25°E	166.48'
Top center Conc. R.O.W. Marker	N32°W	83.43'
8" Tamarack	S37°W	154.75'
Utility Pole (DR4/129)	S29°E	100.04'



Signed by [Signature]
Surveyor's Michigan License No. 29251

Date 30 Dec 1995

NOTE: Bearings are compass bearings corrected for declination. Distances are to a nail in side of witness objects unless noted. FORM APPROVED BY MICHIGAN STATE BOARD OF PROFESSIONAL SURVEYORS, JAN. 28, 1971
REVISED MAY 14, 1975
REVISED JAN. 1983
REVISED OCT., 1995