

**CHIPPEWA COUNTY REMONUMENTATION CORNER
LAND CORNER RECORDATION CERTIFICATE
Filing Requirement of Act 74, Mich. P.A. 1970**

MAR 27 1996

For corners in CHIPPEWA COMMISSION

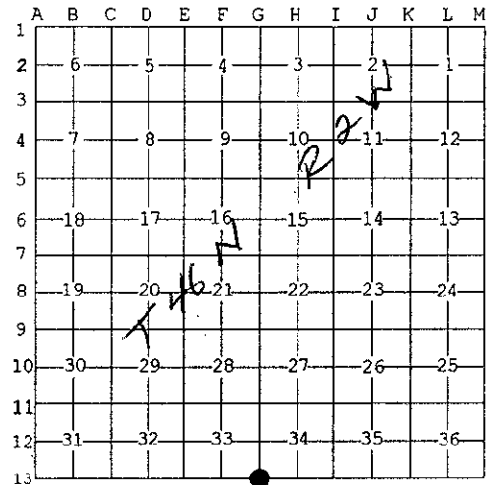
<u>Chippewa</u> (County)	Located In:	Corner Code #
1. Public Land Survey	T46N R 2W T45N R 2W T___ R___ T___ R___	<u>G-13</u> Same G-1 / Corner
2. Property Controlling in Section	S___ T___ R___ S___ T___ R___	_____
3. Miscellaneous Property in Sec.	S___ T___ R___ S___ T___ R___	_____
4. Lot No. _____, Recorded Plat _____		
5. Private Claims _____		

\$ 7.00 LAND CORNER
\$ 2.00 MSSR
29 FEB 96 9:31 A.M. RECEIPT# 462
RECEIVED FOR RECORD
CHIPPEWA COUNTY - STATE OF MICHIGAN
SHARON H. KENNEDY, REGISTER OF DEEDS

Register of Deeds Stamp & File Number

I, Larry R. Rogers, in a field survey on October 23, 1995 do hereby state that under requirements of P.A. 74, Michigan P.A. of 1970, the corner points mentioned in lines 1 and 2 above were in conformance with regulations and rules therefore as required in the current manual of survey instructions of the United States Department of the Interior, Bureau of Land Management or by a decree of a Court of Law and/or that the corner points mentioned in lines 3, 4 and 5 above were in conformance with the rules of the Michigan Board of Land Surveyors or by a Decree of a Court of Law, established, re-established, monumented, recovered, found as expressed below:

NOTE: Not more than 2 corners, all in the same town and range, may be recorded on this certificate.



A. Description of original monument and accessories and/or subsequent restoration:
(G-13) Southwest Corner of Section 34, T46N, R2W.

- 1970: Chippewa County Road Commission replaced cedar post with 1"x18" iron pipe and recorded in Liber 3, Page 198 of the Chippewa County Corner Records.
- 1991: Stephan Szyszkoski found and accepted 1" iron pipe 3 feet North and 1 foot West of intersection of road centerlines and recorded in Liber 7, Page 374 with the following witnesses:
- | | | | | | |
|---------------------------------|-------|--------|----------------|-------|--------|
| Nail & Tag in Corner Fence Post | S63°W | 60.62' | Stop Sign Post | N78°E | 49.20' |
| Stop Sign Post | S75°W | 45.15' | Utility Pole | S40°E | 74.12' |

B. Description of corner evidence found and/or method applied in restoring or reestablishing corner:

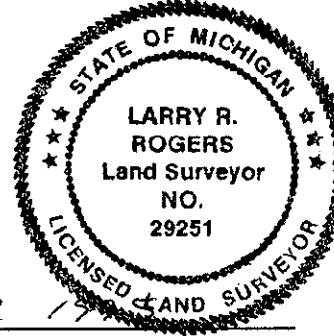
(G-13) This corner is being perpetuated as part of the Chippewa County Remonumentation Program.

Found 1" iron pipe in centerline of 12 Mile Road and 1' West of centerline of Bound Road as recorded by Szyszkoski. Utility pole and stop sign (SW) witnesses recovered and work well. Accepted corner position as found and established three new witnesses.

C. Description of monument for corner and accessories established to perpetuate locating the position of the corner:

(G-13) Corner is a 1" iron pipe, 1 foot West of centerline of Bound Road and in the centerline of 12 Mile Road (gravel).

- Witnesses:
- | | | |
|------------------------|-------|---------|
| 1/2"x24" iron pin | N45°W | 45.00' |
| Utility Pole (DR4/173) | N03°E | 301.19' |
| Utility Pole (DR4/174) | S41°E | 74.03' |
| Kinross Township Sign | S20°W | 63.11' |
| Stop Sign | S71°W | 45.96' |



Signed by [Signature]
Surveyor's Michigan License No. 29251

Date 25 DEC 1995

NOTE: All bearings are compass bearings corrected for declination. All distances are to a nail in side of witness objects unless otherwise noted.