

CHIPPEWA COUNTY REMONUMENTATION CORNER

MAR 27 1996

LAND CORNER RECORDATION CERTIFICATE  
Filing Requirement of Act 74, Mich. P.A. 1970

For corners in COMMISSION

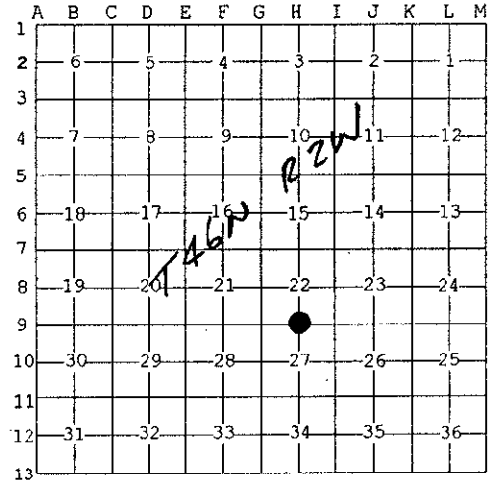
<u>Chippewa</u> (County)	Located In:	Corner Code #
1. Public Land Survey	T <u>46N</u> R <u>2W</u>	<u>H-9</u>
	T <u>   </u> R <u>   </u>	<u>   </u>
	T <u>   </u> R <u>   </u>	<u>   </u>
	T <u>   </u> R <u>   </u>	<u>   </u>
2. Property Controlling in Section	S <u>   </u> T <u>   </u> R <u>   </u>	<u>   </u>
	S <u>   </u> T <u>   </u> R <u>   </u>	<u>   </u>
3. Miscellaneous Property in Sec.	S <u>   </u> T <u>   </u> R <u>   </u>	<u>   </u>
	S <u>   </u> T <u>   </u> R <u>   </u>	<u>   </u>

\$ 7.00 LAND CORNER  
\$ 2.00 MSSR  
29 FEB 96 9:32 A.M. RECEIPT# 462  
RECEIVED FOR RECORD  
CHIPPEWA COUNTY - STATE OF MICHIGAN  
SHARON H. KENNEDY, REGISTER OF DEEDS

Register of Deeds Stamp & File Number

4. Lot No. \_\_\_\_\_, Recorded Plat \_\_\_\_\_  
5. Private Claims \_\_\_\_\_

I, William L. Karr, in a field survey on Nov. 6, 1995 do hereby state that under requirements of P.A. 74, Michigan P.A. of 1970, the corner points mentioned in lines 1 and 2 above were in conformance with regulations and rules therefore as required in the current manual of survey instructions of the United States Department of the Interior, Bureau of Land Management or by a decree of a Court of Law and /or that the corner points mentioned in lines 3, 4 and 5 above were in conformance with the rules of the Michigan Board of Land Surveyors or by a Decree of a Court of Law; established, re-established, monumented, recovered, found as expressed below:

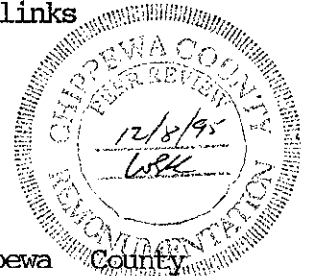


NOTE: Not more than 2 corners, all in the same town and range, may be recorded on this certificate.

A. Description of original monument and accessories and/or subsequent restoration:

(H-9) 1/4 Corner common to Sections 22 and 27, T46N, R2W  
1849: Mellen, P.S. set Mountain Ash for corner  
Spruce 5" N61°E 44 Links W. Birch 9" S83°W 24 Links

1898: County Surveyor notes show this corner on a split of the mile.



B. Description of corner evidence found and/or method applied in restoring or reestablishing corner:

(H-9) This corner is being perpetuated as part of the Chippewa County Remonumentation program.

Found no evidence of original corner or subsequent restoration. Re-established corner 25 feet\* East of old right-of-way fence to the South and 33 feet South of the extension of an old right-of-way fence in the Southeast 1/4 of the Southeast 1/4.

(\*We talked with several farmers in the area who stated that R.O.W. fence were established 25 feet off of the North-South 1/4 line in the early 1900's).

C. Description of monument for corner and accessories established to perpetuate locating the position of the corner:

(H-9) Corner is a 3/4" iron with plastic "Chippewa County Remonumentation" cap.

Witnesses:	20" Double Spruce	N19°E	13.71'
	5" Spruce	S71°E	19.64'
	14" Spruce	S15°E	40.99'
	10" Spruce	S81°W	44.65'



Signed by William L. Karr  
Surveyor's Michigan License No. 27450

Date 12/13/95

NOTE: Bearings are compass bearings corrected for declination. Distances are to a nail in side of witness objects unless noted.