

**SURVEY &
REMONUMENTATION**

MAY 28 1997

COMMISSION

CHIPPEWA COUNTY REMONUMENTATION CORNER

LAND CORNER RECORDATION CERTIFICATE
Filing Requirement of Act 74, Mich. P.A. 1970

For corners in

<u>Chippewa</u> (County)	Located In:	Corner Code #
1. Public Land Survey	T <u>46</u> N R <u>2</u> W	<u>I-6</u>
	T ___ R ___	_____
	T ___ R ___	_____
	T ___ R ___	_____
2. Property Controlling in Section	S ___ T ___ R ___	_____
	S ___ T ___ R ___	_____
3. Miscellaneous Property in Sec.	S ___ T ___ R ___	_____
	S ___ T ___ R ___	_____

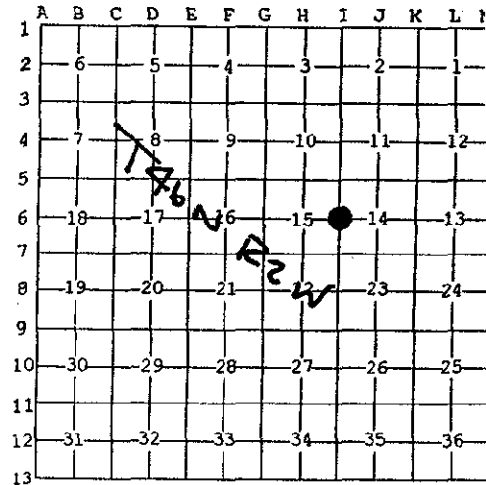
\$2.00 MSSR
3/4/1997 2:35:59 PM Receipt #294
RECEIVED FOR RECORD
CHIPPEWA COUNTY - STATE OF MICHIGAN
SHARON H. KENNEDY, REGISTER OF DEEDS

BOOK 10 PAGE 90

Register of Deeds Stamp & File Number

4. Lot No. _____, Recorded Plat _____
5. Private Claims _____

I, William L. Karr, in a field survey on Dec. 18, 1996 do hereby state that under requirements of P.A. 74, Michigan P.A. of 1970, the corner points mentioned in lines 1 and 2 above were in conformance with regulations and rules therefore as required in the current manual of survey instructions of the United States Department of the Interior, Bureau of Land Management or by a decree of a Court of Law and/or that the corner points mentioned in lines 3, 4 and 5 above were in conformance with the rules of the Michigan Board of Land Surveyors or by a Decree of a Court of Law, established, re-established, monumented, recovered, found as expressed below:



NOTE: Not more than 2 corners, all in the same town and range, may be recorded on this certificate.

A. Description of original monument and accessories and/or subsequent restoration:

(I-6) 1/4 Corner Common to Sections 14 & 15, T.46 N., R.2 W.
1849: H. Mellen set post Cedar 14 S40°E 34 Spruce 10 N25°W 61
1914: F.H. Brown, County Surveyor in surveys for Sections 14 & 15 show the mile as being 5266' and divided evenly.
1995: L.R. Rogers, P.S. 29251 shows the mile as 5262.21 and established a position for the 1/4 corner on-line between the Section corners and on the range of a fence line to the East but does not set the corner.

B. Description of corner evidence found and/or method applied in restoring or reestablishing corner:

(I-6) This Corner is being re-established as part of the Chippewa County Remonumentation Program.

Found no evidence of original corner. Re-established corner position consistent with Rogers' survey of 1995. Distance to the North is 2632.82' (C.S. is 2633'); distance to the South is 2629.39' (C.S. is 2633').

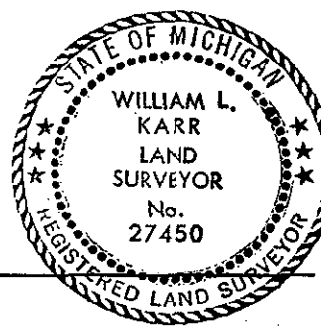
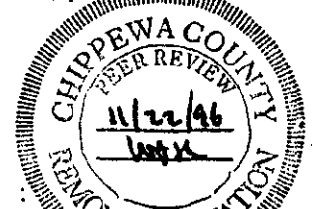
C. Description of monument for corner and accessories established to perpetuate locating the position of the cc

(I-6) Corner is a 3/4" iron with plastic Chippewa County Remonumentation cap. Corner falls 4.5' West of centerline of road and on extension of fence lines to the East and West.

Witnesses:	9" B. Fir	N23°E	111.68'
	5" Tamarack	S55°E	44.45'
	12" Double J. Pine	S63°W	56.20'
	14" Tamarack	N19°W	139.07'

Signed by William L. Karr
Surveyor's Michigan License No. 27450

Date 12-30-96



NOTE: All bearings are compass bearings corrected for declination. All distances are to a nail in side of witness objects unless noted.