

CHIPPEWA COUNTY REMONUMENTATION CORNER

MAR 27 1996

LAND CORNER RECORDATION CERTIFICATE  
Filing Requirement of Act 74, Mich. P.A. 1970

For corners in COMMISSION

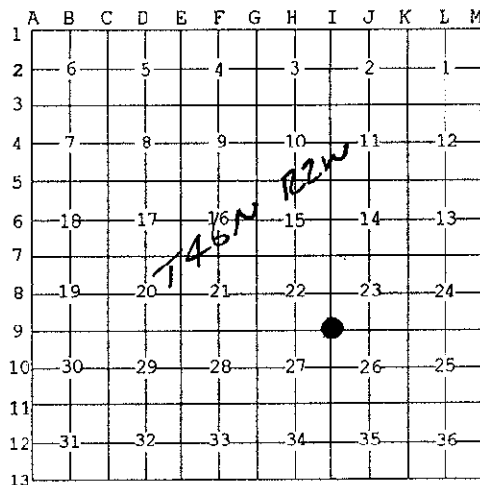
<u>Chippewa</u> (County)	Located In:	Corner Code #
1. Public Land Survey	<u>T46N R 2W</u>	<u>T-9</u>
	T ___ R ___	_____
	T ___ R ___	_____
	T ___ R ___	_____
2. Property Controlling in Section	S ___ T ___ R ___	_____
	S ___ T ___ R ___	_____
3. Miscellaneous Property in Sec.	S ___ T ___ R ___	_____
	S ___ T ___ R ___	_____

\$ 7.00 LAND CORNER  
\$ 2.00 MSSR  
29 FEB 96 9:33 A.M. RECEIPT# 462  
RECEIVED FOR RECORD  
CHIPPEWA COUNTY - STATE OF MICHIGAN  
SHARON H. KENNEDY, REGISTER OF DEEDS

Register of Deeds Stamp & File Number

4. Lot No. \_\_\_\_\_, Recorded Plat \_\_\_\_\_  
5. Private Claims \_\_\_\_\_

I, William L. Karr, in a field survey on Nov. 6, 1995 do hereby state that under requirements of P.A. 74, Michigan P.A. of 1970, the corner points mentioned in lines 1 and 2 above were in conformance with regulations and rules therefore as required in the current manual of survey instructions of the United States Department of the Interior, Bureau of Land Management or by a decree of a Court of Law and /or that the corner points mentioned in lines 3, 4 and 5 above were in conformance with the rules of the Michigan Board of Land Surveyors or by a Decree of a Court of Law, established, re-established, monumented, recovered, found as expressed below:



NOTE: Not more than 2 corners, all in the same town and range, may be recorded on this certificate.

A. Description of original monument and accessories and/or subsequent restoration:

(I-9) Section Corner common to Sections 22, 23, 26 and 27, T46N, R2W

1849: Mellen, D.S. set B Ash for post

W. Pine 16" N4°E 43 links W. Pine 16" S51°W 54 links

1927: County Surveyor corner records show corner with several witnesses.

1987: K.R. Waters, P.S. 33142 found bent railroad spike at record distances from 1927 witnesses. Reset 1/2" iron with cap No. 33142.

B. Description of corner evidence found and/or method applied in restoring or reestablishing corner:

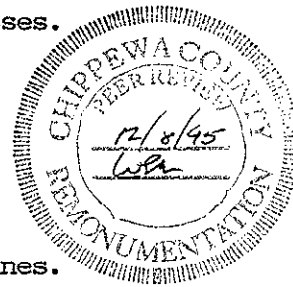
(I-9) This corner is being perpetuated as part of the Chippewa County Remonumentation program.

Found no evidence of original corner. Found 1/2" iron with cap No. 33142 as described in 1987. Accepted corner position as found and established witnesses.

C. Description of monument for corner and accessories established to perpetuate locating the position of the corner:

(I-9) Corner is a 1/2" iron with cap No. 33142 in intersecting road centerlines.

Witnesses:	Power Pole	N13°E	260.62'
	Power Pole (DR4/111/17)	S41°E	73.40'
	Stop Sign	S68°W	36.77'
	Power Pole (DR4/111C/1)	S85°W	278.40'



Signed by William L. Karr  
Surveyor's Michigan License No. 27450

Date 12/22/95

NOTE: Bearings are compass bearings corrected for declination. Distances are to a nail in side of witness objects unless noted. FORM APPROVED BY MICHIGAN STATE BOARD OF PROFESSIONAL SURVEYORS, JAN. 28, 1971  
REVISED MAY 14, 1975  
REVISED JAN, 1983  
REVISED OCT, 1985