

MAY 28 1997

COMMISSION

CHIPPEWA COUNTY REMONUMENTATION CORNER

LAND CORNER RECORDATION CERTIFICATE

Filing Requirement of Act 74, Mich. P.A. 1970 \$7.00 LAND CORNER

For corners in

Chippewa (County)	Located In:	Corner Code #
1. Public Land Survey	T <u>46</u> N R <u>2</u> W	K-2
	T ___ R ___	_____
	T ___ R ___	_____
	T ___ R ___	_____
2. Property Controlling in Section	S ___ T ___ R ___	_____
	S ___ T ___ R ___	_____
3. Miscellaneous Property in Sec.	S ___ T ___ R ___	_____
	S ___ T ___ R ___	_____

\$2.00 NISSR
 3/4/1997 2:37:27 PM Receipt #294
 RECEIVED FOR RECORD
 CHIPPEWA COUNTY - STATE OF MICHIGAN
 SHARON H. KENNEDY, REGISTER OF DEEDS

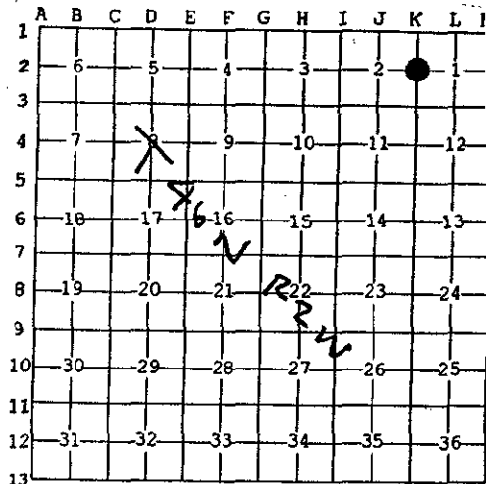
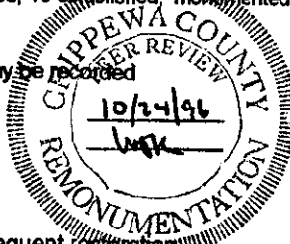
BOOK 10 PAGE 92

Register of Deeds Stamp & File Number

4. Lot No. _____, Recorded Plat _____
 5. Private Claims _____

I, William L. Karr, in a field survey on Dec. 6, 1996 do hereby state that under requirements of P.A. 74, Michigan P.A. of 1970, the corner points mentioned in lines 1 and 2 above were in conformance with regulations and rules therefore as required in the current manual of survey instructions of the United States Department of the Interior, Bureau of Land Management or by a decree of a Court of Law and/or that the corner points mentioned in lines 3, 4 and 5 above were in conformance with the rules of the Michigan Board of Land Surveyors or by a Decree of a Court of Law; established, re-established, monumented, recovered, found as expressed below:

NOTE: Not more than 2 corners, all in the same town and range, may be recorded on this certificate.



A. Description of original monument and accessories and/or subsequent restoration:
 (K-2) 1/4 Corner Common to Sections 1 & 2, T.46 N., R.2 W.
 1849: H. Mellen set post Cedar 6 S25°E 13 Cedar 6 N18°W 8
 1988: L.R. Rogers, P.S. 29251 surveyed the West 1/2 of Section 1 and re-established the corner on-line between Southwest Section corner and the Northwest Section corner and on the extension of an old fence line to the West.
 1994: L.R. Rogers recorded the corner in Liber 9, Page 153 of the Chippewa County Corner Records.

B. Description of corner evidence found and/or method applied in restoring or reestablishing corner:
 (K-2) This Corner is being perpetuated as part of the Chippewa County Remonumentation Program.

Found no evidence of original corner. Found Rogers' corner and (2) remaining witnesses. Accepted corner position as found and established witnesses.

C. Description of monument for corner and accessories established to perpetuate locating the position of the corner:
 (K-2) Corner is a 1/2" iron with cap No. 29251 on extension of an old fence line to the West. Corner falls on Westerly edge of one lane road (on curve).

Witnesses:	11" Cedar	N67°E	74.43' (existing)
	7" Cedar	S83°E	60.65'
	14" Cedar	S62°W	42.22' (existing)
	12" Cedar	N22°W	49.61'



Signed by William L. Karr
 Surveyor's Michigan License No. 27450

Date 12-30-96

NOTE: All bearings are compass bearings corrected for declination. All distances are to a nail in side of witness objects unless noted.