

LEATHLEY &  
REMONUMENTATION

MAY 28 1997

CHIPPEWA COUNTY REMONUMENTATION CORNER

COMMISSION

LAND CORNER RECORDATION CERTIFICATE  
Filing Requirement of Act 74, Mich. P.A. 1970 \$7.00 LAND CORNER

For corners in

Chippewa (County)	Located In:	Corner Code #
1. Public Land Survey	T46N R 2W	K-5
	T R	
	T R	
	T R	
2. Property Controlling in Section	S T R	
	S T R	
3. Miscellaneous Property in Sec.	S T R	
	S T R	

\$2.00 MSSR  
3/4/1997 2:39:32 PM Receipt #294  
RECEIVED FOR RECORD  
CHIPPEWA COUNTY - STATE OF MICHIGAN  
SHARON H. KENNEDY, REGISTER OF DEEDS

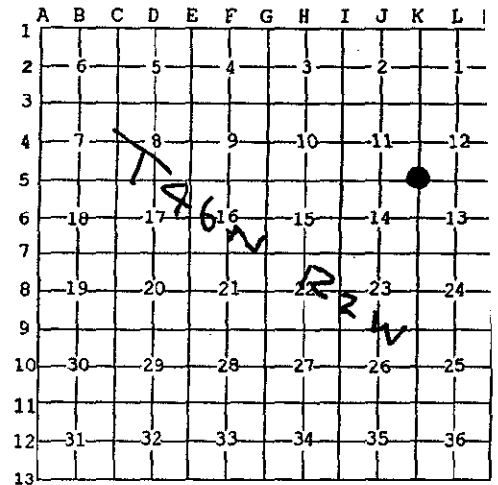
BOOK 10 PAGE 95

Register of Deeds Stamp & File Number

4. Lot No. \_\_\_\_\_, Recorded Plat \_\_\_\_\_  
5. Private Claims \_\_\_\_\_

I, William L. Karr, in a field survey on Dec. 17, 1996 do hereby state that under requirements of P.A. 74, Michigan P.A. of 1970, the corner points mentioned in lines 1 and 2 above were in conformance with regulations and rules therefore as required in the current manual of survey instructions of the United States Department of the Interior, Bureau of Land Management or by a decree of a Court of Law and/or that the corner points mentioned in lines 3, 4 and 5 above were in conformance with the rules of the Michigan Board of Land Surveyors or by a Decree of a Court of Law; established, re-established, monumented, recovered, found as expressed below:

NOTE: Not more than 2 corners, all in the same town and range, may be recorded on this certificate.



A. Description of original monument and accessories and/or subsequent restoration:

(K-5) Section Corner Common to Sections 11, 12, 13 & 14, T.46 N., R.2 W.  
1849: H. Mellen set post Witnesses: Tamarack 7 N55°E 4  
Tamarack 7 S51°W 16

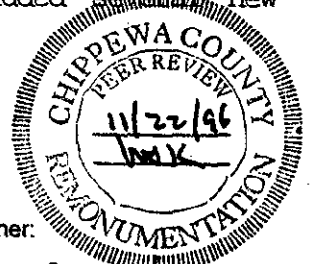
1914: F.H. Brown, County Surveyor notes this corner as original. County Surveyor records show angles off the West side of Section 14 and a distance on the North line of 5300'.

1995: L.R. Rogers, P.S. 29251 re-constructed The North line of Section 14 using Brown's notes and set the Northeast corner of Section 14 and established witnesses.

B. Description of corner evidence found and/or method applied in restoring or reestablishing corner:

(K-5) This Corner is being perpetuated as part of the Chippewa County Remonumentation Program.

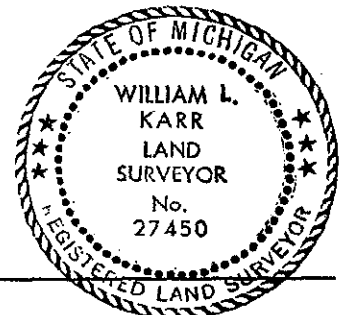
Found no evidence of original corner. Found Rogers' corner and added several new witnesses. Accepted corner position as found.



C. Description of monument for corner and accessories established to perpetuate locating the position of the corner:

(K-5) Corner is a 1/2" iron with cap No. 29251 and falls 3.3' South of an East-West 2-Track road.

Witnesses: 2" B. Fir N37°E 42.35'  
8" Poplar S35°E 32.20'  
14" W. Birch S73°W 33.59'  
14" W. Birch N47°W 53.42'



Signed by William L. Karr  
Surveyor's Michigan License No. 27450

Date 12-30-96

NOTE: All bearings are compass bearings corrected for declination. All distances are to a nail in side of witness objects unless noted.