

MAY 28 1997

COMMISSION

CHIPPEWA COUNTY REMONUMENTATION CORNER

\$7.00 LAND CORNER

LAND CORNER RECORDATION CERTIFICATE

Filing Requirement of Act 74, Mich. P.A. 1970 \$2.00 MSSR

3/4/1997 2:40:12 PM Receipt #294

RECEIVED FOR RECORD

CHIPPEWA COUNTY - STATE OF MICHIGAN
SHARON H. KENNEDY, REGISTER OF DEEDS

BOOK 10 PAGE 96

Register of Deeds Stamp & File Number

For corners in

Chippewa

(County)

Located In:

Corner Code #

1. Public Land Survey

T 46N R 2W

K-6

T R

T R

T R

T R

2. Property Controlling in Section

S T R

S T R

3. Miscellaneous Property in Sec.

S T R

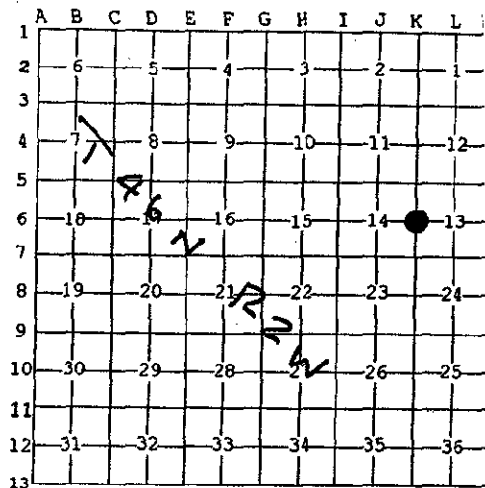
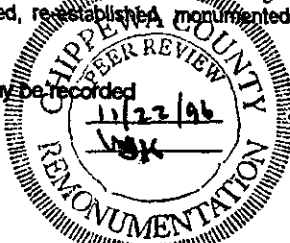
S T R

4. Lot No. _____, Recorded Plat _____

5. Private Claims _____

I, William L. Karr, in a field survey on Dec. 20, 1996 do hereby state that under requirements of P.A. 74, Michigan P.A. of 1970, the corner points mentioned in lines 1 and 2 above were in conformance with regulations and rules therefore as required in the current manual of survey instructions of the United States Department of the Interior, Bureau of Land Management or by a decree of a Court of Law and/or that the corner points mentioned in lines 3, 4 and 5 above were in conformance with the rules of the Michigan Board of Land Surveyors or by a Decree of a Court of Law; established, re-established, monumented, recovered, found as expressed below:

NOTE: Not more than 2 corners, all in the same town and range, may be recorded on this certificate.



A. Description of original monument and accessories and/or subsequent restoration:

(K-6) 1/4 Corner Common to Sections 13, & 14, T.46 N., R.2 W. 1849: H. Mellen set post

Witnesses: Spruce 8 N60°W 14
Spruce 6 N65°E 23

B. Description of corner evidence found and/or method applied in restoring or reestablishing corner:

(K-6) This Corner is being re-established as part of the Chippewa County Remonumentation Program.

Found no evidence of original corner or any subsequent surveys. Re-established corner mid-way and on-line between Section corners to the North and South. Distance North is 2630.84'; distance South is 2630.84'.

C. Description of monument for corner and accessories established to perpetuate locating the position of the corner:

(K-6) Corner is a 3/4" x 24" iron with plastic Chippewa County Remonumentation cap. Area is very wet.

Witnesses: 8" Tamarack N33°E 75.56'
14" Elm S77°E 35.55'
3" Tamarack S41°W 31.07'
10" Tamarack N13°W 60.45'



Signed by William L. Karr
Surveyor's Michigan License No. 27450

Date 12-30-96

NOTE: All bearings are compass bearings corrected for declination. All distances are to a nail in side of witness objects unless noted.