

MAY 28 1997

CHIPPEWA COUNTY REMONUMENTATION CORNER

COMMISSION

LAND CORNER RECORDATION CERTIFICATE

Filing Requirement of Act 74, Mich. P.A. 1970 \$7.00 LAND CORNER

For corners in

<u>Chippewa</u> (County)	Located in:	Corner Code #
1. Public Land Survey	T <u>46N</u> R <u>2W</u>	<u>L-5</u>
	T___ R___	_____
	T___ R___	_____
	T___ R___	_____
2. Property Controlling in Section	S___ T___ R___	_____
	S___ T___ R___	_____
3. Miscellaneous Property in Sec.	S___ T___ R___	_____
	S___ T___ R___	_____

\$2.00 HSSR
3/4/1997 2:41:31 PM Receipt #294
RECEIVED FOR RECORD
CHIPPEWA COUNTY - STATE OF MICHIGAN
SHARON H. KENNEDY, REGISTER OF DEEDS

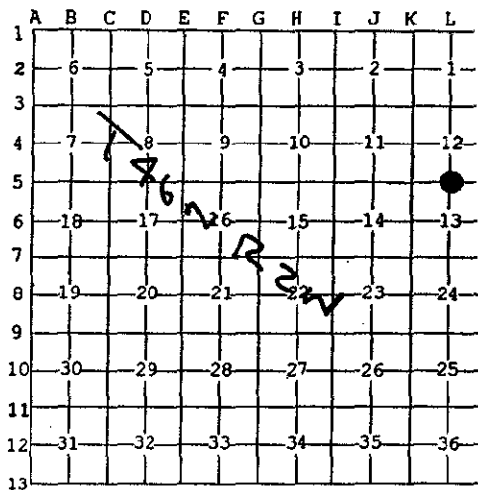
BOOK 10 PAGE 98

Register of Deeds Stamp & File Number

4. Lot No. _____, Recorded Plat _____
5. Private Claims _____

I, William L. Karr, in a field survey on Dec. 17, 1996 do hereby state that under requirements of P.A. 74, Michigan P.A. of 1970, the corner points mentioned in lines 1 and 2 above were in conformance with regulations and rules therefore as required in the current manual of survey instructions of the United States Department of the Interior, Bureau of Land Management or by a decree of a Court of Law and/or that the corner points mentioned in lines 3, 4 and 5 above were in conformance with the rules of the Michigan Board of Land Surveyors or by a Decree of a Court of Law; established, re-established, monumented, recovered, found as expressed below:

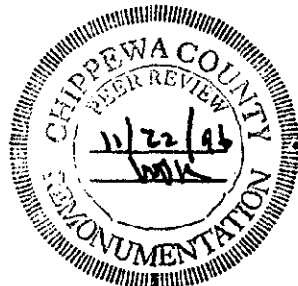
NOTE: Not more than 2 corners, all in the same town and range, may be recorded on this certificate.



A. Description of original monument and accessories and/or subsequent restoration:

(L-5) 1/4 Corner Common to Sections 12 & 13, T.46 N., R.2 W. 1849; H. Mellen set Maple post in original survey.

Witnesses:	Spruce 5	N04°E	16
	Maple 14	S09°E	24



B. Description of corner evidence found and/or method applied in restoring or reestablishing corner:

(L-5) This Corner is being re-established as part of the Chippewa County Remonumentation Program.

Found no evidence of original corner. Re-established corner midway and on-line between Southwest corner Section 12 and Southeast corner Section 12. Distance to the East and West is 2691.60'. Total mile measures 5383.20'.

C. Description of monument for corner and accessories established to perpetuate locating the position of the corner:

(L-5) Corner is a 3/4" x 24" iron with plastic Chippewa County Remonumentation cap. Corner falls in ditch 18' North of centerline of 2-Track to the West and 55' West of extension of the centerline of Forrest Side road to the North.

Witnesses:	Power pole	N59°E	33.55'
	Power pole	S55°E	101.67'
	3" B. Fir	S33°W	44.85'
	20" Multiple Maple	N56°W	7.85'



Signed by William L. Karr
Surveyor's Michigan License No. 27450

Date 12-30-96

NOTE: All bearings are compass bearings corrected for declination. All distances are to a nail in side of witness objects as noted.