

**LAND CORNER RECORDATION CERTIFICATE**  
**Filing Requirement of Act 74, Mich. P.A. 1970**  
**Chippewa County Remonumentation Corner**

SECTION

For corners in

Chippewa County Located in: Corner Code #

1. Public Land Survey T46N R7W **M-13**  
 T46N R6W A-13 Same  
 T45N R7W M-1 Corner  
 T45N R6W A-1

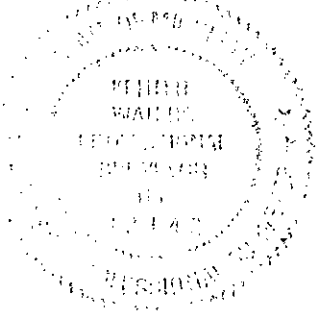
2. Property Controlling S T R  
 in Section S T R  
 3. Miscellaneous S T R  
 Property in Sec. S T R

4. Lot No. , Recorded Plat  
 5. Private Claims

BOOK **11** PAGE **128**

\$7.00 LAND CORNER  
 \$2.00 MSSR  
 23 FEB 2000 4:45:32 PM Receipt #21179  
 RECEIVED FOR RECORD  
 CHIPPEWA COUNTY - STATE OF MICHIGAN  
 SHARON H. KENNEDY, REGISTER OF DEEDS

Register of Deeds Stamp & File Number



	A	B	C	D	E	F	G	H	I	J	K	L	M
1													
2	6	5	4	3	2	1							
3													
4	7	8	9	10	11	12							
5													
6	18	17	16	15	14	13							
7													
8	19	20	21	22	23	24							
9													
10	30	29	28	27	26	25							
11													
12	31	32	33	34	35	36							
13													

I, Keith R. Waters, in a field survey on December 14, 1999, do hereby state that under requirements of P.A. 74, Michigan P.A. of 1970, the corner points mentioned in lines 1 and 2 above were in conformance with regulations and rules therefore as required in the current manual of survey instructions of the United States Department of the Interior, Bureau of Land Management or by a decree of a Court of Law and /or that the corner points mentioned in lines 3, 4 and 5 above were in conformance with the rules of the Michigan Board of Land Surveyors or by a Decree of a Court of Law; established, re-established, monumented, recovered, found as expressed below:

NOTE: Not more than 2 corners, all in the same town and range, may be recorded on this certificate.

A. Description of original monument and accessories and/or subsequent restoration:

M-13 (A-13, M-1, A-1) Township Corner Common to  
T45N, R6W, T45N, R7W, T46N, R6W, & T46N, R7W  
 1840 - Original corner established by Austin Burt. Witnesses: Beech 10, S65°W 47 links - Sugar 8, N62°W 29 links.  
 1936 - GLO Dependent Resurvey of T46N, R6W. No evidence of original corner was found. Deposited a granite boulder at the proportionate position, 2 feet below the surface of Highway "28". A local corner (a concrete monument) was found bearing S32°E 100 links from the reestablished corner. Set a witness monument N00°04'W 100 links from the granite boulder. Witnesses to witness corner: 8" Soft Maple, N68¼°W 35 links - 10" Elm, N65¼°E 33 links - 14" Soft Maple, S22¼°E 18 links - 16" Soft Maple, S77¼°W 61 links.  
 1979 - Harold Y. Stockholm, R.L.S. 23519, LCRC recorded in Liber 4, page 233, Chippewa County corner records. Recovered witness monument, local corner, and all record bearing trees from 1936 GLO Dependent Resurvey. New witnesses to witness corner: 8" Red Maple, N84°E 41.6' - Highway R.O.W. Post, N45°E 56.7'.

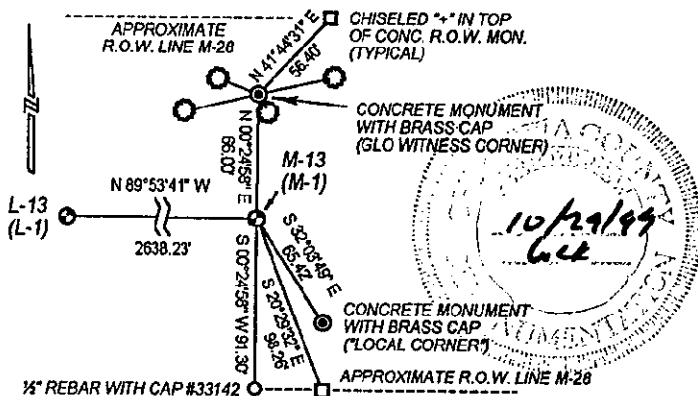
B. Description of corner evidence found and/or method applied in restoring or reestablishing corner:

This corner is being perpetuated as part of the Chippewa County Remonumentation Program. Found the concrete witness monument, the concrete monument at the "local corner", the four maple bearing trees, and the right-of-way post as called for in the above mentioned 1979 LCRC. The monument at the "local corner" appears to be intended as a witness corner, as it is stamped "100' N". It is also stamped "Chippewa County Corner". However, I can find no County Surveyor records concerning this corner, other than a 1917 drawing of Section 36, T46N, R7W, which indicates no evidence of this corner. The local witness corner would place the township corner 45'± north and 35'± east of the 1936 GLO position. Accepted the GLO witness monument and set a "Mag Nail" in Highway M-28 at the corner location, 66.00 feet south of the witness corner, on line with the ¼ corner at M-12 to the north.

C. Description of monument for corner and accessories established to perpetuate locating the position of the corner:

Set a "Mag Nail" at the corner location, which falls in the eastbound lane of Highway M-28, 8.7 feet south of the existing centerline. Also established additional reference monuments as shown in the sketch below.

Witnesses to GLO concrete monument at witness corner to township corner:  
 24" Maple, S76°09'23"W 39.89'  
 18" Maple, S27°04'27"E 11.59'  
 14" Maple, N69°37'02"W 22.47'  
 11" Maple, N77°45'08"E 41.45'  
 Concrete R.O.W. Monument, N41°44'31"E 56.40'  
 Note: Bearings and distances to trees are from the witness corner to the head of a nail and tag #33142 in the side of the tree. Bearings are in relation to the sketch to right.



Signed by Keith R. Waters

Date 12-29-99

Surveyor's Michigan License No. 33142