

MAR 09 1994

Chippewa County Remonumentation Corner

RECEIVED FOR RECORD
CHIPPEWA COUNTY
STATE OF MICHIGAN

LAND CORNER RECORDATION CERTIFICATE
Filing Requirement of Act 74, Mich. P.A. 1970

93 DEC 14 PH 4: 26

COMMISSION

J. Roger Malott
REGISTER OF DEEDS

For corners in

Chippewa
(County)

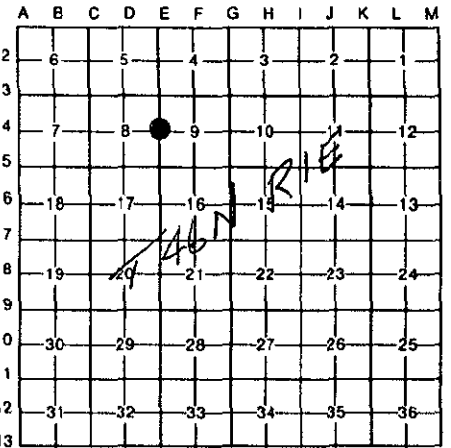
Located in:

Corner Code #

- | | | | | | |
|------------------------------------|---|------------|---|-----------|------------|
| 1. Public Land Survey | T | <u>46N</u> | R | <u>1E</u> | <u>E-4</u> |
| | T | | R | | |
| | T | | R | | |
| | T | | R | | |
| 2. Property Controlling in Section | S | | T | | R |
| | S | | T | | R |
| 3. Miscellaneous Property in Sec. | S | | T | | R |
| | S | | T | | R |

Register of Deeds Stamp & File Number

4. Lot No. _____, Recorded Plat _____
5. Private Claims _____



I, William L. Karr, in a field survey on November 23, 19 93

do hereby certify that under requirements of P.A. 74, Michigan P.A. of 1970, the corner points mentioned in lines 1 and 2 above were in conformance with regulations and rules therefore as required in the current manual of survey instructions of the United States Department of the Interior, Bureau of Land Management or by a decree of a Court of Law and/or that the corner points mentioned in lines 3, 4 and 5 above were in conformance with the rules of the Michigan Board of Land Surveyors or by a Decree of a Court of Law; established, re-established, monumented, re-monumented, recovered, found as expressed below:

NOTE: Not more than 4 corners, all in the same town and range, may be recorded on this certificate.

A. Description of original monument and accessories and/or subsequent restoration:

(E-4) 1/4 Corner Common to Sections 8 & 9, (T46N-R1E)

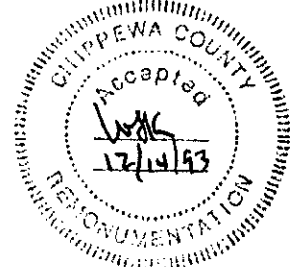
This corner was recorded by Keith R. Waters, L.S. 33142, in Liber 7, Page 250 of the Chippewa County Corner Records as a 1/2" x 18" iron with cap #33142, with the following witnesses:

- | | | |
|------------|-------|---------|
| Power Pole | N76°W | 49.11' |
| Power Pole | S85°E | 49.85' |
| Power Pole | S03°E | 284.69' |

B. Description of corner evidence found and/or method applied in restoring or reestablishing corner:

(E-4) This corner is being perpetuated as part of the Chippewa County Remonumentation Program.

Found a 1/2" iron with cap #33142 and all witnesses as called for. Accepted iron as found and added one witness.



C. Description of monument for corner and accessories established to perpetuate locating the position of the corner:

(E-4) Corner is a 1/2" iron with cap #33142 in the centerline of Shunk Road.

- | | | |
|-------------------------------------|-------|---------|
| Witnesses: Power Pole (#A) | N81°W | 49.11' |
| Power Pole (DR1/100) | S85°E | 49.85' |
| Power Pole | S03°E | 284.69' |
| 2nd Post South of Corner Fence Post | S81°W | 53.07' |



Signed by William L. Karr Date 12/14/93

Surveyor's Michigan License No. 27450

NOTE: Bearings are compass bearings corrected for declination.
Distances are to a nail in side of witness objects unless noted.