

MAR 09 1994

Chippewa County Remonumentation Corner

RECEIVED FOR RECORD  
CHIPPEWA COUNTY  
STATE OF MICHIGAN

COMMISSION

LAND CORNER RECORDATION CERTIFICATE

Filing Requirement of Act 74, Mich. P.A. 1970

93 DEC 14 PM 4: 26

For corners in

Chippewa

(County)

Located In:

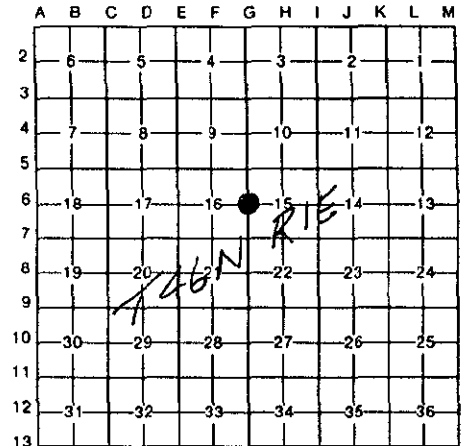
Corner Code #

- 1. Public Land Survey T 46N R 1E G-6
- T \_\_\_\_\_ R \_\_\_\_\_
- T \_\_\_\_\_ R \_\_\_\_\_
- T \_\_\_\_\_ R \_\_\_\_\_
- 2. Property Controlling S \_\_\_\_\_ T \_\_\_\_\_ R \_\_\_\_\_
- in Section S \_\_\_\_\_ T \_\_\_\_\_ R \_\_\_\_\_
- 3. Miscellaneous S \_\_\_\_\_ T \_\_\_\_\_ R \_\_\_\_\_
- Property in Sec. S \_\_\_\_\_ T \_\_\_\_\_ R \_\_\_\_\_

*J. Roger Matlock*  
REGISTER OF DEEDS

Register of Deeds Stamp & File Number

- 4. Lot No. \_\_\_\_\_, Recorded Plat \_\_\_\_\_
- 5. Private Claims \_\_\_\_\_



I, William L. Karr, in a field survey on November 24, 1993, do hereby certify that under requirements of P.A. 74, Michigan P.A. of 1970, the corner points mentioned in lines 1 and 2 above were in conformance with regulations and rules therefore as required in the current manual of survey instructions of the United States Department of the Interior, Bureau of Land Management or by a decree of a Court of Law and/or that the corner points mentioned in lines 3, 4 and 5 above were in conformance with the rules of the Michigan Board of Land Surveyors or by a Decree of a Court of Law; established, re-established, monumented, re-monumented, recovered, found as expressed below:

**NOTE: Not more than 4 corners, all in the same town and range, may be recorded on this certificate.**

A. Description of original monument and accessories and/or subsequent restoration:  
(G-6) 1/4 Corner Common to Sections 15 & 16, (T46N-R1E)

This corner was recorded by L.R. Rogers, L.S. 29251 in Liber 7, Page 016 of the Chippewa County Corner Records as a 3/4" x 24" iron pin with the following witnesses:

Corner Fence Post	N54°W	32.12'
20" Oak	N66°E	156.00'
22" Aspen	S84°W	83.74'
1/2" iron with cap #29251	East	33.05'

B. Description of corner evidence found and/or method applied in restoring or reestablishing corner:

(G-6) This corner is being perpetuated as part of the Chippewa County Remonumentation Program.

Found a 3/4" iron and three witnesses. Accepted corner position as found and added one new witness.



C. Description of monument for corner and accessories established to perpetuate locating the position of the corner:  
(G-6) Corner is a 3/4" iron in the centerline of North-South Ridge Road (gravel).

Witnesses: Corner Fence Post	N54°W	32.26'
20" Oak "stump"	N66°E	156.00'
22" Aspen	S89°W	83.72'
1/2" iron with cap #29251	S86°E	33.05'
6" Spruce	N59°E	148.44'



Signed by William L. Karr

Date 12/14/93

Surveyor's Michigan License No. 27450

NOTE: Bearings are compass bearings corrected for declination.  
Distances are to a nail in side of witness objects unless noted.