

MAY 28 1997

COMMISSION

**LAND CORNER RECORDATION CERTIFICATE**  
**Filing Requirement of Act 74, Mich. P.A. 1970**  
**Chippewa County Remonumentation Corner**

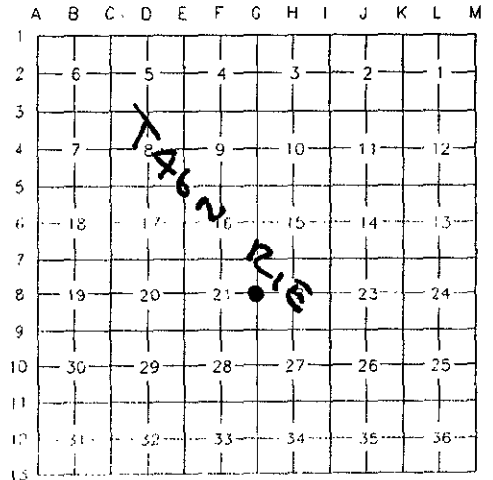
For corners in

Chippewa County	Located in:	Corner Code #
1. Public Land Survey	T46N R1E	G-8
	T R	
	T R	
	T R	
2. Property Controlling in Section	S T R	
	S T R	
3. Miscellaneous Property in Sec.	S T R	
	S T R	
4. Lot No. , Recorded Plat		
5. Private Claims		

\$7.00 LAND CORNER

\$2.00 MSSR  
 2/28/1997 3:08:39 PM Receipt #217  
 RECEIVED FOR RECORD  
 CHIPPEWA COUNTY - STATE OF MICHIGAN  
 SHARON H. KENNEDY, REGISTER OF DEEDS

BOOK 9 PAGE 370  
 Register of Deeds Stamp & File Number



I, William L. Karr, in a field survey on November 4, 1996, do hereby state that under requirements of P.A. 74, Michigan P.A. of 1970, the corner points mentioned in lines 1 and 2 above were in conformance with regulations and rules therefore as required in the current manual of survey instructions of the United States Department of the Interior, Bureau of Land Management or by a decree of a Court of Law and /or that the corner points mentioned in lines 3, 4 and 5 above were in conformance with the rules of the Michigan Board of Land Surveyors or by a Decree of a Court of Law; established, re-established, monumented, recovered, found as expressed below:

NOTE: Not more than 2 corners, all in the same town and range, may be recorded on this certificate.

A. Description of original monument and accessories and/or subsequent restoration:

(G-8) 1/4 Corner Common to Sections 21 & 22, T. 46 N., R. 1 E.

1845 J.H. Mullett set post in original survey.

1920 F.H. Brown in records in County Surveyors Office for a survey in section 22 shows distances on the West side of the section as 2594' on the North 1/2 mile and 2593' on the South 1/2 mile.

1992 L.R. Rogers in a survey in section 21, Northwoods Land Surveying Job 419-37, established a position for the corner as being on line with the section corners to the North and South, and on the range of fences to the East and West.

1995 K.R. Waters in a survey in section 22, Meridian Consultants Job 95196, reestablished and monumented a position for the 1/4 corner. This position matches that as established by Brown in 1920, the 1/2 mile to the North measures 2594.52'.

B. Description of corner evidence found and/or method applied in restoring or reestablishing corner:

(G-8) 1/4 Corner Common to Sections 21 & 22, T. 46 N., R. 1 E.

This corner is being perpetuated as part of the Chippewa County Remonumentation Program.

Found 3/4" iron set by Waters in 1995. Position established by Waters falls 5' North of that used by Rogers. Could find no evidence of corner from Rogers survey. Accepted the position as monumented by Waters for the corner position.

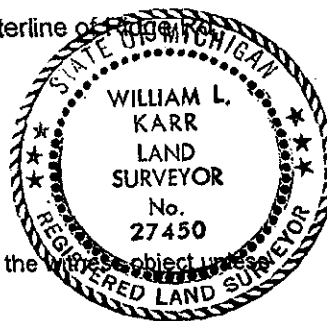
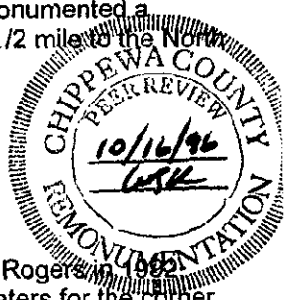
C. Description of monument for corner and accessories established to perpetuate locating the position of the corner:

(G-8) 1/4 Corner Common to Sections 21 & 22, T. 46 N., R. 1 E.

Corner is a 3/4" re-bar with plastic Chippewa County Remonumentation cap. Corner falls in centerline of edge of North-South (gravel), 0.5' below grade.

Witnesses:	6" Spruce	N 60° E	93.44'
	Fence Post	S 70° E	56.79'
	Fence Post	S 44° W	64.81'
	Power Pole	N 85° W	31.46'

Bearings are compass bearings, corrected for declination, all distances are to a nail and tag in the side of the witness object unless otherwise noted.



Signed by William L. Karr

Date 12-30-96

Surveyor's Michigan License No. 27450