

SURVEY &  
REMONUMENTATION

1993

COMMISSION

Chippewa County Remonumentation Corner

LAND CORNER RECORDATION CERTIFICATE  
Filing Requirement of Act 74, Mich. P.A. 1970

RECEIVED FOR RECORD  
CHIPPEWA COUNTY  
STATE OF MICHIGAN

93 NOV 31 AM 9:57

*J. Roger Malott*  
REGISTER OF DEEDS

For corners in

Chippewa  
(County)

Located In:

Corner Code ##

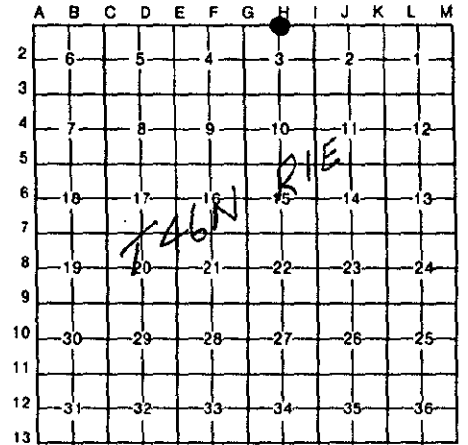
|                                       |                          |            |
|---------------------------------------|--------------------------|------------|
| 1. Public Land Survey                 | T <u>46N</u> R <u>1E</u> | <u>H-1</u> |
|                                       | T _____ R _____          | _____      |
|                                       | T _____ R _____          | _____      |
|                                       | T _____ R _____          | _____      |
| 2. Property Controlling<br>In Section | S _____ T _____ R _____  | _____      |
|                                       | S _____ T _____ R _____  | _____      |
| 3. Miscellaneous<br>Property in Sec.  | S _____ T _____ R _____  | _____      |
|                                       | S _____ T _____ R _____  | _____      |

Register of Deeds Stamp & File Number

4. Lot No. \_\_\_\_\_, Recorded Plat \_\_\_\_\_  
5. Private Claims \_\_\_\_\_

I, William L. Karr, in a field survey on July 30, 19 93, do hereby certify that under requirements of P.A. 74, Michigan P.A. of 1970, the corner points mentioned in lines 1 and 2 above were in conformance with regulations and rules therefore as required in the current manual of survey instructions of the United States Department of the Interior, Bureau of Land Management or by a decree of a Court of Law and/or that the corner points mentioned in lines 3, 4 and 5 above were in conformance with the rules of the Michigan Board of Land Surveyors or by a Decree of a Court of Law; established, re-established, monumented, re-monumented, recovered, found as expressed below:

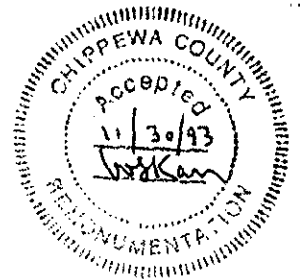
**NOTE: Not more than 4 corners, all in the same town and range, may be recorded on this certificate.**



A. Description of original monument and accessories and/or subsequent restoration:

(H-1) North 1/4 Corner Section 3, T46N-R1E

Corner not established in original survey.



B. Description of corner evidence found and/or method applied in restoring or reestablishing corner:

(H-1) This corner is being established as part of the Chippewa County Remonumentation Program.

Corner position was established on the extension of a fence to the South and on line between the Southwest corner and the South 1/4 corner of Section 34.

C. Description of monument for corner and accessories established to perpetuate locating the position of the corner:

(H-1) Corner is a 3/4" x 24" iron with stamped 2 1/2" diameter aluminum cap (Chippewa County Monumentation) P.S. 27450. Corner falls in old grown up East-West Road. Falls on extension of fence line to South.

|                                       |       |        |
|---------------------------------------|-------|--------|
| Witnesses: 1/2" iron in drill hole in |       |        |
| 4' x 4' boulder                       | N60°E | 93.38' |
| Wood corner fence post                | South | 23.19' |
| 8" Spruce                             | S32°W | 80.84' |
| 8" Aspen                              | N06°W | 58.41' |
| Standard Corner                       | East  | 7.50'  |



Signed by William L. Karr Date 11/12/93

Surveyor's Michigan License No. 27450

NOTE: Bearings are compass bearings corrected for declination.  
Distances are to a nail in side of witness objects unless noted.