

LAND CORNER RECORDATION CERTIFICATE
Filing Requirement of Act 74, Mich. P.A. 1970

For corners in
Chippewa
(County)

Located In: Corner Code #

1. Public Land Survey	T <u>46N</u> R <u>1E</u>	<u>I-3</u>
	T <u>46N</u> R <u>1E</u>	<u>I-2</u>
	T _____ R _____	_____
	T _____ R _____	_____
2. Property Controlling in Section	S _____ T _____ R _____	_____
	S _____ T _____ R _____	_____
3. Miscellaneous Property in Sec.	S _____ T _____ R _____	_____
	S _____ T _____ R _____	_____

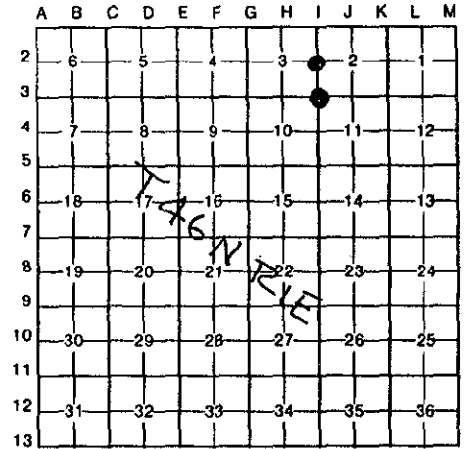
RECEIVED FOR RECORD
CHIPPEWA COUNTY
STATE OF MICHIGAN

94 JUL 22 AM 11:16

J. Roger Malott
REGISTER OF DEEDS
Register of Deeds Stamp & File Number

4. Lot No. _____, Recorded Plat _____
5. Private Claims _____

I, Larry R. Rogers, in a field survey on NOVEMBER 23, 19 93, do hereby certify that under requirements of P.A. 74, Michigan P.A. of 1970, the corner points mentioned in lines 1 and 2 above were in conformance with regulations and rules therefore as required in the current manual of survey instructions of the United States Department of the Interior, Bureau of Land Management or by a decree of a Court of Law and/or that the corner points mentioned in lines 3, 4 and 5 above were in conformance with the rules of the Michigan Board of Land Surveyors or by a Decree of a Court of Law; established, re-established, monumented, re-monumented, recovered, found as expressed below:



NOTE: Not more than 4 corners, all in the same town and range, may be recorded on this certificate.

A. Description of original monument and accessories and/or subsequent restoration:

(I-3) Section Corner Common to Sections 2, 3, 10 & 11 (T46N R1E)

1983: William L. Karr, L.S. #27450
Recorded in L.6, P. 122 as 1/2" iron.
1991: L.E. Weinreis reset 1/2" iron, with cap #32343 (L.7, P. 325)

S. edge metal Post	N67°E	40.78'
7" Tamarack	S39°E	114.77'
N. edge metal Post	S66°W	38.88'
9" Aspen	N19°W	128.55'

(I-2) 1/4 Corner of Sections 2 & 3 (T46N-R1E)

1983: William L. Karr, L.S. #27450
Recorded in L.5, P.121-1/2" iron, cap# 27450
1991: L.E. Weinreis reset 1/2" iron, with cap #32343 (L.7, P.325)

Power Pole 6N	N31°E	140.08 (pk)
SW cor house fnd 6489	N73°E	116.64'
10" Aspen	S30°E	69.83'
10" Aspen	S21°W	158.95'

B. Description of corner evidence found and/or method applied in restoring or reestablishing corner:

(I-3) Found corner and accessories as recorded in Liber 7, Page 325 of Chippewa County Records. Accepted corner position as found.

(I-2) Found corner and accessories as recorded in Liber 7, Page 325 of Chippewa County Records. Accepted corner position as found.

SURVEY &
REMONUMENTATION

JUL 26 1994

COMMISSION



C. Description of monument for corner and accessories established to perpetuate locating the position of the corner:

(I-3) Corner is a 1/2" iron, L.S. 32343 cap in a monument box. Falls in centerline of Riverside Drive on centerline of 7 Mile Rd. to the East (gravel) and 9.5' South of the centerline of 7 Mile Road to West (gravel). Ties:

South edge metal Stop Sign Post	N67°E	40.78'
7" Tamarack	S39°E	114.77'
North edge metal Stop Sign Post	S66°W	38.88'
9" Aspen	N19°W	128.55'

(I-2) Corner is a 1/2" iron, L.S. 32343 cap in a monument box. Falls in centerline of Riverside Drive. Falls on fence line to the West. Ties:

Power Pole 6N	N31°E	140.08 (pk)
SW corner of house foundation 6489	N73°E	116.64'
10" Aspen	S30°E	69.83'
10" Aspen	S21°W	158.95'

Signed by _____ Date 20 July 1994

Surveyor's Michigan License No. 29251

NOTE: Bearings are compass bearings corrected for declination. Distances are to a nail in side of witness objects unless noted.