

# SURVEY & REMONUMENTATION

APR 27 1995

CHIPPEWA COUNTY REMONUMENTATION CORNER

## LAND CORNER RECORDATION CERTIFICATE

Filing Requirement of Act 74, Mich. P.A. 1970

### COMMISSION

For corners in

Chippewa  
(County)

Located In:

Corner Code #

- |                                       |                          |            |
|---------------------------------------|--------------------------|------------|
| 1. Public Land Survey                 | T <u>46N</u> R <u>1E</u> | <u>K-3</u> |
|                                       | T _____ R _____          | _____      |
|                                       | T _____ R _____          | _____      |
|                                       | T _____ R _____          | _____      |
| 2. Property Controlling in Section    | S _____ T _____ R _____  | _____      |
|                                       | S _____ T _____ R _____  | _____      |
| 3. Miscellaneous Property in Sec.     | S _____ T _____ R _____  | _____      |
|                                       | S _____ T _____ R _____  | _____      |
| 4. Lot No. _____, Recorded Plat _____ |                          |            |
| 5. Private Claims _____               |                          |            |

\$ 7.00 LAND CORNER  
 \$ 2.00 MSSR  
 5 DEC 94 12:10 P.M. RECEIPT# 1517  
 RECEIVED FOR RECORD  
 CHIPPEWA COUNTY - STATE OF MICHIGAN  
 SHARON H. KENNEDY, REGISTER OF DEEDS  
 Register of Deeds Stamp & File Number

I, William L. Karr, in a field survey on November 9, 1994

do hereby certify that under requirements of P.A. 74, Michigan P.A. of 1970, the corner points mentioned in lines 1 and 2 above were in conformance with regulations and rules therefore as required in the current manual of survey instructions of the United States Department of the Interior, Bureau of Land Management or by a decree of a Court of Law and/or that the corner points mentioned in lines 3, 4 and 5 above were in conformance with the rules of the Michigan Board of Land Surveyors or by a Decree of a Court of Law; established, re-established, monumented, re-monumented, recovered, found as expressed below:

**NOTE: Not more than 4 corners, all in the same town and range, may be recorded on this certificate.**

A. Description of original monument and accessories and/or subsequent restoration:

(K-3) Section Corner 1, 2, 11 & 12, T.46 N., R.1 E.

1845: Millett set post for corner. Hemlock 20 S30W 24  
 Cedar 10 N82E 35

1984: Wm. Karr found a 5/8" iron in road intersection which matched the calls in three adjacent plats. Corner was recorded in L.6 P.107

Witnesses: 12" Poplar S08W 62.96'  
 N.leg of sign N71E 18.03'  
 Cut "v" in cul. S57E 23.79'  
 St. sign N48W 37.80'

B. Description of corner evidence found and/or method applied in restoring or reestablishing corner:

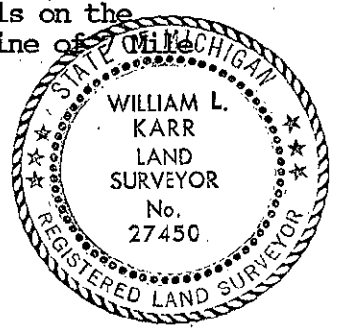
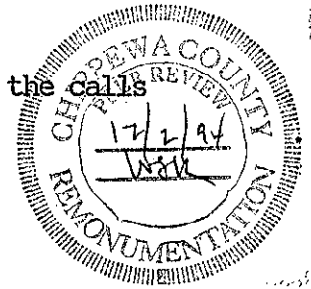
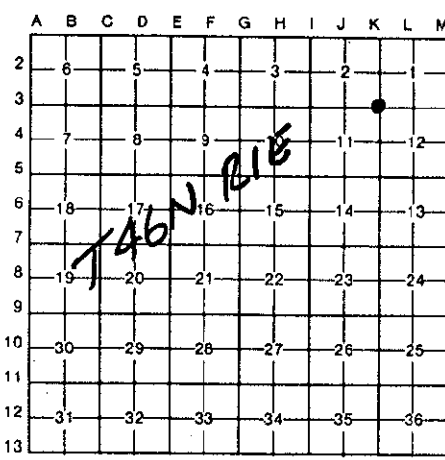
(K-3) This corner is being perpetuated as part of the Chippewa County Remonumentation program.

Found no evidence of original corner. Found a 5/8" iron as recorded in 1984. There were (2) irons in this area approximately 27 feet apart. The wrong iron was witnessed in 1984. After a thorough review of all available records, I could not find any surveys based on the erroneous position. The correct corner was witnessed and the 5/8" iron was removed. The corner which remained was replaced with a 3/4"x24" iron and is consistent with the (3) plats mentioned on the 1984 corner certificate.

C. Description of monument for corner and accessories established to perpetuate locating the position of the corner:

(K-3) Corner is a 3/4"x 24" iron with plastic "Chippewa County Remonumentation" cap set 0.4' below the surface of the road (gravel). Corner falls on the centerline of Scenic Drive to the North and 27' North of centerline of \_\_\_\_\_ to the West.

Witnesses: 12" Aspen S58°W 107.70'  
 6" Ash N44°E 35.65'  
 8" Spruce S39°E 96.52'  
 Southerly of 2 gate post S15°E 65.39'



Signed by William L. Karr Date 12/2/94

Surveyor's Michigan License No. 27450

723-12

NOTE: Bearings are compass bearings corrected for declination.  
 Distances are to a nail in side of witness objects unless noted.