

DEC 18 1999

LAND CORNER RECORDATION CERTIFICATE
Filing Requirement of Act 74, Mich. P.A. 1970
Chippewa County Remonumentation Corner

SECTION

For corners in

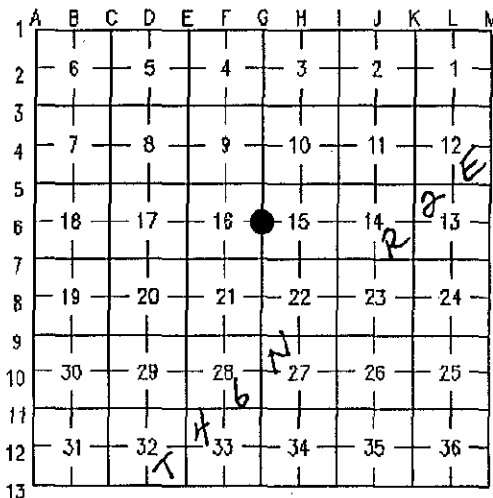
Chippewa County Located In: Corner Code #
1. Public Land Survey T 46N R 2E G-6
2. Property Controlling in Section S T R
3. Miscellaneous Property in Sec. S T R

\$7.00 LAND CORNER
\$2.00 MSSR
21 JAN 1999 10:08:28 AM Receipt #1312
RECEIVED FOR RECORD
CHIPPEWA COUNTY - STATE OF MICHIGAN
SHARON H. KENNEDY, REGISTER OF DEEDS
BOOK 10 PAGE 327
Register of Deeds Stamp & File Number

4. Lot No. , Recorded Plat
5. Private Claims

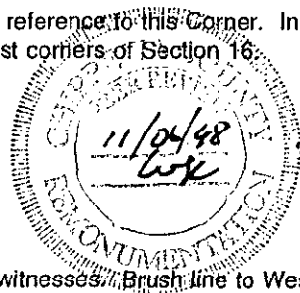
I, Larry R. Rogers in a field survey on November 10, 1998, do hereby state that under requirements of P.A. 74, Michigan P.A. of 1970, the corner points mentioned in lines 1 and 2 above were in conformance with regulations and rules therefore as required in the current manual of survey instructions of the United States Department of the Interior, Bureau of Land Management or by a decree of a Court of Law and/or that the corner points mentioned in lines 3, 4 and 5 above were in conformance with the rules of the Michigan Board of Land Surveyors or by a Decree of a Court of Law; established, re-established, monumented, recovered, found as expressed below:

NOTE: Not more than 2 corners, all in the same town and range, may be recorded on this certificate.



A. Description of original monument and accessories and/or subsequent restoration:
(G-6) 1/4 Corner Common to Sections 15 and 16, Township 46 North, Range 2 East.

The original corner was placed in 1845 by James H. Mullett. County Surveyor records make no specific reference to this corner. In 1992, Ronald Bischer, P.S. 22428 set a 1/2" drill rod midway and on line between the Northeast and Southeast corners of Section 16.



B. Description of corner evidence found and/or method applied in restoring or reestablishing corner:
(G-6) 1/4 Corner Common to Sections 15 and 16, Township 46 North, Range 2 East.

This corner is being perpetuated as part of the Chippewa County Remonumentation Program. Found no evidence of original corner position. Found Bischer 1/2" iron pin and recovered three Bischer witnesses. Brush line to West and South. Accepted corner position as found.

C. Description of monument for corner and accessories established to perpetuate locating the position of the corner:
(G-6) 1/4 Corner Common to Sections 15 and 16, Township 46 North, Range 2 East.

Corner is a 1/2" iron pin with P.S. cap number 22428 on extension of brush lines to West and South.

Witnesses:
12" White Pine N74'E 38.72 feet
6" White Pine N01'E 58.70 feet
10" White Pine S39'W 40.10 feet
5" Jack Pine S27'E 36.84 feet
Steel Fence Post North 2.0 feet



Signed by: [Signature]

Date 28 Dec 1998

Surveyor's Michigan License No. 29251

NOTE: All bearings are compass bearings corrected for declination (6'W). All distances are to a nail and tag in the side of witness object unless otherwise noted.