

SURVEY & REMONUMENTATION

NOV 07 1994

COMMISSION

Chippewa County Remonumentation Corner

LAND CORNER RECORDATION CERTIFICATE 7.00 LAND CORNER
 Filing Requirement of Act 74, Mich. P.A. 1970 2.00 MSSR

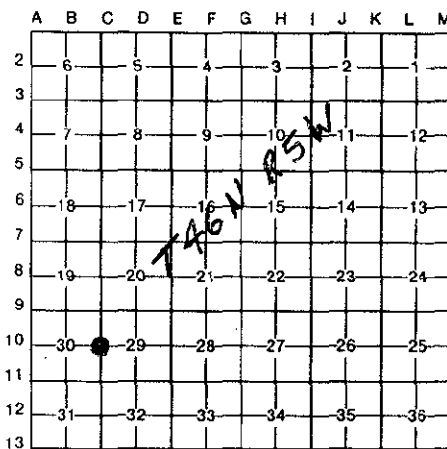
18 OCT 94 1:06 P.M. RECEIPT# 700
 RECEIVED FOR RECORD
 CHIPPEWA COUNTY - STATE OF MICHIGAN
 SHARON H. KENNEDY, REGISTER OF DEEDS

For corners in
Chippewa
 (County)

Located In:	Corner Code #
T <u>46N</u> R <u>5W</u>	<u>C-10</u>
T _____ R _____	_____
T _____ R _____	_____
T _____ R _____	_____
S _____ T _____ R _____	_____
S _____ T _____ R _____	_____
S _____ T _____ R _____	_____
S _____ T _____ R _____	_____

Register of Deeds Stamp & File Number

4. Lot No. _____, Recorded Plat _____
 5. Private Claims _____



I, William L. Karr, in a field survey on July 22, 19 93, do hereby certify that under requirements of P.A. 74, Michigan P.A. of 1970, the corner points mentioned in lines 1 and 2 above were in conformance with regulations and rules therefore as required in the current manual of survey instructions of the United States Department of the Interior, Bureau of Land Management or by a decree of a Court of Law and/or that the corner points mentioned in lines 3, 4 and 5 above were in conformance with the rules of the Michigan Board of Land Surveyors or by a Decree of a Court of Law; established, re-established, monumented, re-monumented, recovered, found as expressed below:

NOTE: Not more than 4 corners, all in the same town and range, may be recorded on this certificate.

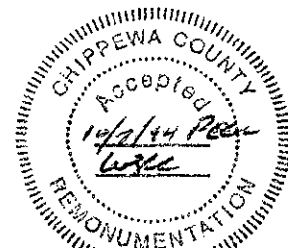
A. Description of original monument and accessories and/or subsequent restoration:

- (C-10) 1/4 Corner Common to Sections 30 & 29 (T46N-R5W)
1974 N.D. Alix, L.S. 6254, found 1 1/2" pipe and set 4" concrete monument 32.3' West. Recorded in Liber 1, Page 140 of the Chippewa County Corner Records.
 Utility Pole N70°E 32.3' Utility Pole N80°W 34.5'
1980 James H. Granger, L.S. 16041, found 1 1/2" pipe and witness monument. Recorded in Liber 4, Page 382 of the Chippewa County Corner Records.
 4" Concrete Monument with Brass Cap West 30.40'
 Utility Pole (EK2/37/9) N68°E 34.56'
 10" Poplar S38°W 40.35'
 3/4" Iron S10°W 23.95'

B. Description of corner evidence found and/or method applied in restoring or reestablishing corner:

(C-10) This corner is being perpetuated as part of the Chippewa County Remonumentation Program.

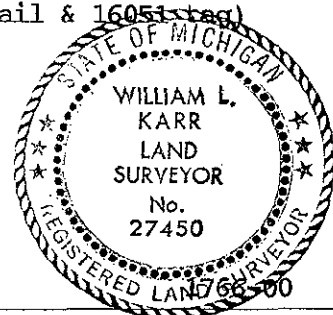
This corner was obliterated in road reconstruction. Found one remaining witness object. Re-established corner position from record tie and previous survey control in the area. Added three additional witness objects.



C. Description of monument for corner and accessories established to perpetuate locating the position of the corner:

(C-10) Corner is a 3/4" iron with a plastic "Chippewa County Remonumentation" cap. Corner falls 4.5' East of the centerline of Salt Point Road (paved).

Witnesses:	Bearing	Distance	Notes
Power Pole (EK2/37/9)	N68°E	34.54'	(existing nail & 16051 tag)
9" Poplar	S37°E	80.72'	
5" Spruce	N84°W	44.48'	
8" Aspen	N63°W	45.42'	



Signed by William L. Karr 27450 Date 10/12/94

NOTE: Bearings are compass bearings corrected for declination. Distances are to a nail in side of witness objects unless noted.