

LAND CORNER RECORDATION CERTIFICATE
Filing Requirement of Act 74, Mich. P.A. 1970

For corners in
Chippewa
(County)

Located In: Corner Code ##

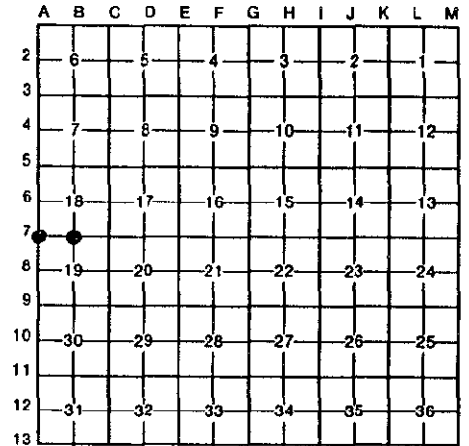
RECEIVED FOR RECORD
CHIPPEWA COUNTY
STATE OF MICHIGAN

94 JUL 22 AM 11:06

J. Roger Malick
REGISTER OF DEEDS

Register of Deeds Stamp & File Number

- 1. Public Land Survey T 47N R 1E A-7 Same
T 47N R 1W M-7/Corner
T 47N R 1E B-7
2. Property Controlling S T R
in Section S T R
3. Miscellaneous S T R
Property in Sec. S T R
4. Lot No. , Recorded Plat
5. Private Claims



I, Keith R. Waters, in a field survey on NOVEMBER 10, 19 93, do hereby certify that under requirements of P.A. 74, Michigan P.A. of 1970, the corner points mentioned in lines 1 and 2 above were in conformance with regulations and rules therefore as required in the current manual of survey instructions of the United States Department of the Interior, Bureau of Land Management or by a decree of a Court of Law and/or that the corner points mentioned in lines 3, 4 and 5 above were in conformance with the rules of the Michigan Board of Land Surveyors or by a Decree of a Court of Law; established, re-established, monumented, re-monumented, recovered, found as expressed below:

NOTE: Not more than 4 corners, all in the same town and range, may be recorded on this certificate.

A. Description of original monument and accessories and/or subsequent restoration:

(A-7) Northwest Corner Section 19 (T47N-R1E) Subsequent restoration: J.H. Granger, 4/76 Corner recorded in Liber 1, Page 204 of the Chippewa County corner records. W.L. Karr, set 1/2" x 18" iron with cap #27450 in 4/86, (Liber 6, Page 391).
Power Pole (L19/5) N02°E 45.00'
Anchor Pole S58°E 57.55'
Anchor Pole S04°W 32.00'
10" Elm S82°W 157.10'

(B-7) North 1/2 Corner Section 19 (T47N-R1E) Corner is called for in the M.D.O.T. right-of-way maps for M-129. Subsequent restoration: W.L. Karr. Set 1/2" x 18" pin with cap #27450 in 4/86 (Liber 6, Page 391)
Power Pole (L21/3) N02°E 28.18'
Power Pole (E1) S02°W 30.70'
Chiseled hole top of triang. row marker S56°W 66.03'
Power Pole (32) N62°W 64.53'

B. Description of corner evidence found and/or method applied in restoring or reestablishing corner:

(A-7) Found corner and all accessories as recorded in Liber 6, Page 391 of Chippewa County Records. Accepted corner position as found.

(B-7) Found corner and all accessories as recorded in Liber 6, Page 391 of Chippewa County Records. Accepted corner position as found.

SURVEY &
REMONUMENTATION

JUL 26 1994

COMMISSION



C. Description of monument for corner and accessories established to perpetuate locating the position of the corner:

(A-7) Corner is a 1/2" x 18" iron with cap #27450 in monument box. Corner is 4' South centerline of 3 Mile Road.
Witnesses:

(B-7) Corner is a 1/2" x 18" iron with cap #27450 in a monument box. Corner falls in of the centerline of 3 Mile Road and 104' East of centerline of M-129.
Witnesses:

Power Pole (L19/5) N02°E 45.00'
Anchor Pole S58°E 57.55'
Anchor Pole S04°W 32.00'
10" Elm S82°W 157.10'

Power Pole (L21/3) N02°E 28.18'
Power Pole (E1) S02°W 30.70'
Chiseled hole in top of triangular r-o-w marker S56°W 66.03'
Power Pole (32) N62°W 64.53'

Signed by Keith R. Waters Date 7-22-94

Surveyor's Michigan License No. 33142

NOTE: Bearings are compass bearings corrected for declination. Distances are to a nail in side of witness objects unless noted.