

LAND CORNER RECORDATION CERTIFICATE
Filing Requirement of Act 74, Mich. P.A. 1970

For corners in
Chippewa
(County)

Located In: Corner Code #

RECEIVED FOR RECORD
CHIPPEWA COUNTY
STATE OF MICHIGAN

94 JUL 22 AM 11:13

J. Roger Malott

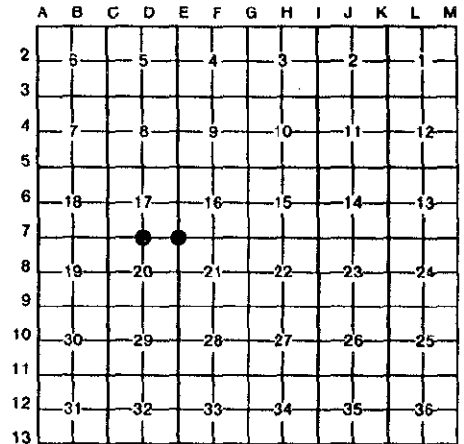
REGISTER OF DEEDS

Register of Deeds Stamp & File Number

- 1. Public Land Survey T 47N R 1E D-7
- T 47N R 1E E-7
- T _____ R _____
- T _____ R _____
- 2. Property Controlling S _____ T _____ R _____
- in Section S _____ T _____ R _____
- 3. Miscellaneous S _____ T _____ R _____
- Property in Sec. S _____ T _____ R _____
- 4. Lot No. _____, Recorded Plat _____
- 5. Private Claims _____

I, Keith R. Waters, in a field survey on NOVEMBER 10, 19 93, do hereby certify that under requirements of P.A. 74, Michigan P.A. of 1970, the corner points mentioned in lines 1 and 2 above were in conformance with regulations and rules therefore as required in the current manual of survey instructions of the United States Department of the Interior, Bureau of Land Management or by a decree of a Court of Law and/or that the corner points mentioned in lines 3, 4 and 5 above were in conformance with the rules of the Michigan Board of Land Surveyors or by a Decree of a Court of Law; established, re-established, monumented, re-monumented, recovered, found as expressed below:

NOTE: Not more than 4 corners, all in the same town and range, may be recorded on this certificate.



- A. Description of original monument and accessories and/or subsequent restoration:

<p><u>(D-7) North 1/4 Corner Section 20 (T47N-R1E)</u> Subsequent restoration: June 1902, Plat of "McNaughton's Addition Number 2", calls for gas pipe 18" to 48" long. 1987: W.L. Karr found 1 1/2" o.d. pipe and accepted (L.6,P.389). 7" Aspen N40°E 41.65' Power Pole (0374/9) S62°E 70.69' Maple in Clump of 3 S46°W 53.74' 10" Aspen N22°W 35.06'</p>	<p><u>(E-7) Northeast Corner Section 20 (T47N-R1E)</u> Subsequent restoration: N. D. Alix 3/76, Corner recorded in Liber 1, Page 198 as a 1" pipe. 1987: W.L. Karr found 1" pipe and accepted (Liber 6, Page 389). Power Pole (DR3/199) N66°E 72.25' Power Pole (DR3/198) S54°E 78.52' Concrete Monument S45°W 70.04' Power Pole (DR3/199/1) N60°W 74.60'</p>
---	---
- B. Description of corner evidence found and/or method applied in restoring or reestablishing corner:

<p><u>(D-7) Found corner and all accessories as recorded in Liber 6, Page 389 of Chippewa County Records. Accepted corner position found.</u></p>	<p><u>(E-7) Found corner and all accessories as recorded in Liber 6, Page 389 of Chippewa County Records. Accepted corner position as found.</u></p>
---	--

SURVEY &
REMONUMENTATION

JUL 26 1994

COMMISSION



- C. Description of monument for corner and accessories established to perpetuate locating the position of the corner:

<p><u>(D-7) Corner is a 1/2" x 18" iron with cap #27450 in a monument box. Corner falls in centerline of 3 Mile Road.</u></p>	<p><u>(E-7) Corner is a 1/2" x 18" iron with cap #27450 in a monument box. Corner falls 7' North of centerline of 3 Mile Road and 1' West of centerline of Shunk Road.</u></p>
---	--

Witnesses:

- 7" Aspen N40°E 41.65'
- Power Pole (0374/9) S62°E 70.69'
- Maple in Clump of 3 S46°W 53.74'
- 10" Aspen N22°W 35.06'

Witnesses:

- Power Pole (DR3/199) N66°E 72.25'
- Power Pole (DR3/198) S54°E 78.52'
- Concrete Monument S45°W 70.04'
- Power Pole (DR3/199/1) N60°W 74.60'

Signed by Keith R. Waters

Date 7-22-94

Surveyor's Michigan License No. 33142

NOTE: Bearings are compass bearings corrected for declination.
Distances are to a nail in side of witness objects unless noted.