

CHIPPEWA COUNTY REMONUMENTATION CORNER

MAR 27 1996

LAND CORNER RECORDATION CERTIFICATE
Filing Requirement of Act 74, Mich. P.A. 1970

For corners in CHIPPEWA COMMISSION

Located In: Chippewa (County) Corner Code # _____

1. Public Land Survey T47N R1E G-11
 T R
 T R
 T R
 T R

2. Property Controlling in Section S T R
 S T R

3. Miscellaneous Property in Sec. S T R
 S T R

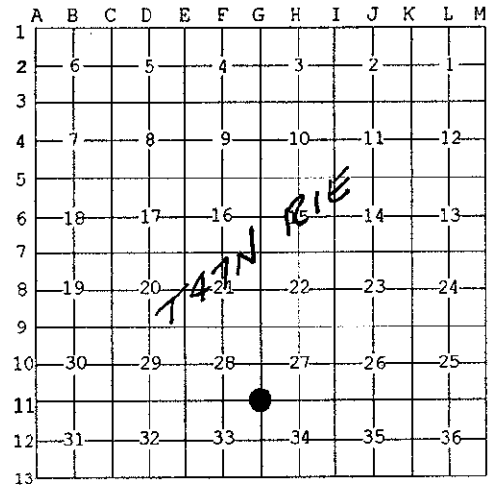
\$ 7.00 LAND CORNER
 \$ 2.00 HSSR
 29 FEB 96 9:42 A.M. RECEIPT# 462
 RECEIVED FOR RECORD
 CHIPPEWA COUNTY - STATE OF MICHIGAN
 SHARON H. KENNEDY, REGISTER OF DEEDS

Register of Deeds Stamp & File Number

4. Lot No. _____, Recorded Plat _____
 5. Private Claims _____

I, William L. Karr, in a field survey on Dec. 8, 1995 do hereby state that under requirements of P.A. 74, Michigan P.A. of 1970, the corner points mentioned in lines 1 and 2 above were in conformance with regulations and rules therefore as required in the current manual of survey instructions of the United States Department of the Interior, Bureau of Land Management or by a decree of a Court of Law and/or that the corner points mentioned in lines 3, 4 and 5 above were in conformance with the rules of the Michigan Board of Land Surveyors or by a Decree of a Court of Law, established, re-established, monumented, recovered, found as expressed below:

NOTE: Not more than 2 corners, all in the same town and range, may be recorded on this certificate.



A. Description of original monument and accessories and/or subsequent restoration:

(G-11) Section Corner 27, 28, 33 and 34, T47N R1E

1845: James H. Mullette set post

Witnesses: Cedar 10" N66°W 41 links
 Cedar 8" S48°E 20 links

1977: T.M. Kelly, P.S. 24599 found an old post 2' below road surface and re-set 1/2" iron with cap #24599 6" below grade. Corner was recorded in Liber 1, Page 264.

B. Description of corner evidence found and/or method applied in restoring or reestablishing corner:

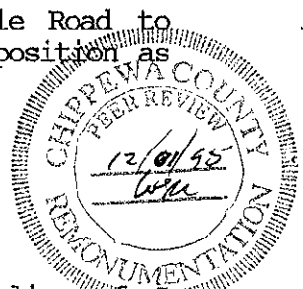
(G-11) This corner is being perpetuated as part of the Chippewa County Remonumentation program.

Found 1/2" iron in centerline of Ridge Road and centerline of 5 Mile Road to East as described by Kelly (all witnesses were gone). Accepted corner position as found and established new witnesses.

C. Description of monument for corner and accessories established to perpetuate locating the position of the corner:

(G-11) Corner is a 1/2" iron in centerline of Ridge Road and centerline of 5 Mile Road to the East.

Witnesses: Fence Post N25°W 93.06'
 Corner Fence Post N55°E 45.51'
 Corner Fence Post S50°E 50.59'
 Power Pole S53°W 59.95'



Signed by William L. Karr
 Surveyor's Michigan License No. 27450

Date 12/15/95

NOTE: Bearings are compass bearings corrected for declination. Distances are to a nail in side of witness objects unless noted. FORM APPROVED BY MICHIGAN STATE BOARD OF PROFESSIONAL SURVEYORS, JAN. 28, 1971
 REVISED MAY 14, 1975
 REVISED JAN., 1983
 REVISED OCT., 1995