

**CHIPPEWA COUNTY REMONUMENTATION CORNER**

WAR 27 1996

**LAND CORNER RECORDATION CERTIFICATE**  
Filing Requirement of Act 74, Mich. P.A. 1970

For corners in  
Chippewa

(County)

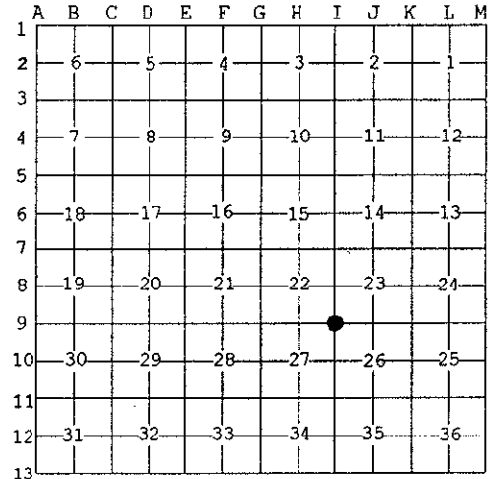
	Located In:	Corner Code #
1. Public Land Survey	T <u>47N</u> R <u>1W</u>	I-9
	T _____ R _____	_____
	T _____ R _____	_____
	T _____ R _____	_____
2. Property Controlling in Section	S _____ T _____ R _____	_____
	S _____ T _____ R _____	_____
3. Miscellaneous Property in Sec.	S _____ T _____ R _____	_____
	S _____ T _____ R _____	_____

\$ 7.00 LAND CORNER  
\$ 2.00 HSSR  
28 FEB 96 4:42 P.M. RECEIPT# 459  
RECEIVED FOR RECORD  
CHIPPEWA COUNTY - STATE OF MICHIGAN  
SHARON H. KENNEDY, REGISTER OF DEEDS

Register of Deeds Stamp & File Number

4. Lot No. \_\_\_\_\_, Recorded Plat \_\_\_\_\_  
5. Private Claims \_\_\_\_\_

Keith R. Waters 12/11 95  
I, \_\_\_\_\_, in a field survey on \_\_\_\_\_, 19\_\_\_\_ do hereby state that under requirements of P.A. 74, Michigan P.A. of 1970, the corner points mentioned in lines 1 and 2 above were in conformance with regulations and rules therefore as required in the current manual of survey instructions of the United States Department of the Interior, Bureau of Land Management or by a decree of a Court of Law and/or that the corner points mentioned in lines 3, 4 and 5 above were in conformance with the rules of the Michigan Board of Land Surveyors or by a Decree of a Court of Law, established, re-established, monumented, recovered, found as expressed below:



**NOTE:** Not more than 2 corners, all in the same town and range, may be recorded on this certificate.

**A. Description of original monument and accessories and/or subsequent restoration:**

I-9 Corner Common to Sections 22, 23, 26, & 27, Town 47 North, Range 1 West  
1845 - Original ties (James Mullett): Spruce 10, N19°W 29 links - Fir 8, S36°E 60 links.  
1962 - Chippewa County Road Commission, recorded in liber 3, page 63 (09/15/77) of Chippewa County recorded corners. 1/2" iron pin.  
Witnesses: Pole, N40°W 38.76' - Pole, S45°E 30.21' - Fence Post, S10°W 29.48'  
1983 - William L. Karr, P.S. 27450, liber 6, page 106, Chippewa County recorded corners. Found 1/2" iron in old road intersection.  
Witnesses: Power Pole, N20°E 127.03' - Power Pole (E22), S43°E 78.00' - Fence Post, S12°W 29.40'  
Corner is also shown on MDOT right-of-way maps for Baker Service Road, page 57. Corner is shown at P.I. location Station 117+56.73.

**B. Description of corner evidence found and/or method applied in restoring or reestablishing corner:**

This corner is being perpetuated as part of the Chippewa County Remonumentation Program.  
Found a 1/2" iron and three witness objects as called for in LCRC liber 6, page 106. Position fits well in relation to recovered corners at I-7 and I-8 as shown on above mentioned MDOT right-of-way maps. Accepted corner position as found, replaced 1/2" iron with a 3/4" x 24" rebar with a plastic Chippewa County Remonumentation cap, and established additional witness object.



**C. Description of monument for corner and accessories established to perpetuate locating the position of the corner:**

Corner is a 3/4" x 24" rebar with a plastic Chippewa County Remonumentation cap in the approximate centerline of east-west gravel road (4 Mile Road). Witnesses:  
Power Pole (E22), S43°E 77.83'      Note: Distances are to a nail/tag P.S. 33142 in the side of the witness object.  
Power Pole (E21), N27°E 126.94'      Aspen is blazed and painted. Bearings are compass bearings corrected for declination.  
6" Aspen, N10°E 61.54'  
Power Pole (E2201), N78°W 221.11'

Signed by Keith R. Waters  
Surveyor's Michigan License No. 33142

Date December 29, 1995

