

Chippewa County Remonumentation Corner

LAND CORNER RECORDATION CERTIFICATE

Filing Requirement of Act 74, Mich. P.A. 1970

For corners in
Chippewa
(County)

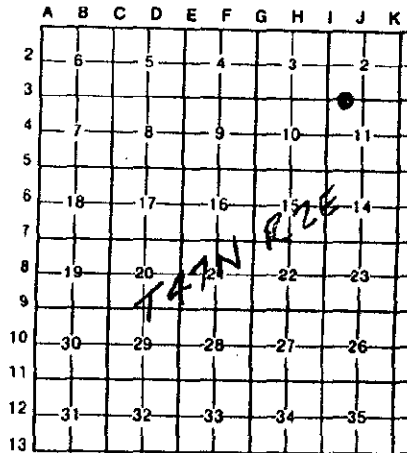
Located In: Corner Code #

- 1. Public Land Survey T 47N R 2E I-3/J-3 #8
T _____ R _____
T _____ R _____ SURVEY &
T _____ R _____ REMONUMENTATION
- 2. Property Controlling S _____ T _____ R _____
in Section S _____ T _____ R _____
- 3. Miscellaneous S _____ T _____ R _____ JUL 22 1999
Property in Sec. S _____ T _____ R _____

- 4. Lot No. _____, Recorded Plat _____ SECTION
- 5. Private Claims _____

\$ 7.00 LAND CORNER
\$ 2.00 MSSR
18 OCT 94 1:05 P.M. RECEIPT #
RECEIVED FOR RECORD
CHIPPEWA COUNTY - STATE OF MICHIGAN
SHARON H. KENNEDY, REGISTER OF DEED

Register of Deeds Stamp & File Number



I, William L. Karr, in a field survey on October 7, 19 93, do hereby certify that under requirements of P.A. 74, Michigan P.A. of 1970, the corner points mentioned in lines 1 and 2 above were in conformance with regulations and rules therefore as required in the current manual of survey instructions of the United States Department of the Interior, Bureau of Land Management or by a decree of a Court of Law and/or that the corner points mentioned in lines 3, 4 and 5 above were in conformance with the rules of the Michigan Board of Land Surveyors or by a Decree of a Court of Law; established, re-established, monumented, re-monumented, recovered, found as expressed below:

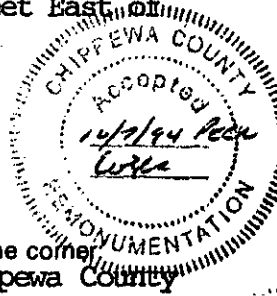
NOTE: Not more than 4 corners, all in the same town and range, may be recorded on this certificate.

A. Description of original monument and accessories and/or subsequent restoration:
(I-3/J-3) Witness Corner to the Meander Corner Common to Sections 2 & 11 (T47N-R2E)

1845 J.H. Mullett called for Willow at corner position 27.5 (1815.00 feet) chains East of Section Corner.

B. Description of corner evidence found and/or method applied in restoring or reestablishing corner:
(I-3/J-3) This corner is being re-established as part of the Chippewa County Remonumentation Program.

Found a square 1" iron at the East end of a stone wall. Found a 1" iron pipe at the West end of the stone wall. Also found a brass capped monument at Northwest corner of Section 11. Used the found irons and monument to establish the direction of the Section line and monumented it's intersection with Lake George, 1570.66 feet East of Section Corner.



C. Description of monument for corner and accessories established to perpetuate locating the position of the corner:
(I-3/J-3) Corner is a 3/4" x 24" iron with a 3" diameter aluminum "Chippewa County Remonumentation" cap.

Witnesses: 13" Maple	N34°E	7.21'
10" Maple	S37°E	11.73'
8" Maple	S31°W	7.31'
6" Maple	N53°W	23.30'



Signed by William L. Karr Date 10/12/94 1798-00
Surveyor's Michigan License No. 27450

NOTE: Bearings are compass bearings corrected for declination. APPROVED BY MICHIGAN STATE BOARD OF LAND SURVEYORS, JAN. 28, 1988. REVISED MAY 14, 1991. REVISED JAN. 1, 1993.

LIBER 8 PAGE 350

Other code: 8