

STATE OF MICHIGAN  
DEPARTMENT  
OF  
NATURAL RESOURCES

LAND CORNER RECORD

Chippewa COUNTY

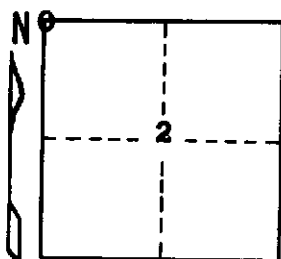
T 49N R 6W

DESCRIPTION OF CORNER Closing Corner bet. Secs. 2-3

CORNER MONUMENT 1" Pipe with 4" Aluminum Cap.

DATE MONUMENT PLACED AND WITNESSED 7-14-71

WITNESSES TO CORNER..... 22" Red Oak (NBT) S2°W 21.1'



24" W. Pine (NBT) S53°W 44.2'

AND

CIRCLE CORNER REGISTERED

DESCRIPTION IN DETAIL AS TO HOW CORNER WAS LOCATED AND IDENTIFIED OR RESTORED.

This corner re-monumented and witnesses.

Found a Monument placed by Colwell, Chippewa County Surveyor in 1937. This Mon. is marked as a witness to the Sec. Cor., 2-3-34-35, erroneously.

Record Notes indicate the township line terminating at lake with a Meander Corner placed at 76.95 chs, making section 34, fractional.

The closing line bet. Secs. 2-3, T49N R6W was then placed 2.60 chs west of this Meander Corner.

Believe this monument was placed on the Correction Line, at the Closing Corner and incorrectly defined as a witness to a Sec. Cor. which never existed.

Ran this Correction Line West, across the township, finding several original corners. This closing corner location agrees with record calls of the original survey.

SURVEYOR'S SEAL

SIGNED

*Billy D. Buckler*  
Billy D. Buckler

DATE 9-28-71

REGISTERED LAND SURVEYOR

DISTRIBUTION:

County Courthouse  
Area Forester (Regions I & II)  
District or Region Surveyor  
Forestry Div., Lansing

R 4047  
Rev. 10/68